

Recombinant Human CTLA4 Protein, GST-tagged

Cat. No. CTLA4-2075H Lot. No. (See product label)

SPECIFICATION

Product Overview	Human CTLA4 partial ORF (NP_005205, 36 a.a. - 135 a.a.) recombinant protein with GST-tag at N-terminal.
Species	Human
Source	Wheat Germ
Description	This gene is a member of the immunoglobulin superfamily and encodes a protein which transmits an inhibitory signal to T cells. The protein contains a V domain, a transmembrane domain, and a cytoplasmic tail. Alternate transcriptional splice variants, encoding different isoforms, have been characterized. The membrane-bound isoform functions as a homodimer interconnected by a disulfide bond, while the soluble isoform functions as a monomer. Mutations in this gene have been associated with insulin-dependent diabetes mellitus, Graves disease, Hashimoto thyroiditis, celiac disease, systemic lupus erythematosus, thyroid-associated orbitopathy, and other autoimmune diseases. [provided by RefSeq, Jul 2008]
Molecular Mass	36.74 kDa
AA Sequence	KAMHVAQPAVVLASSRGIASFVCEYASPGKATEVRVTVLRQADSQVTEVCAATYMM GNELTFLDDSICTGTSSGNQVNLTIQGLRAMDTGLYICKVELMY
Applications	Enzyme-linked Immunoabsorbent Assay Western Blot (Recombinant protein) Antibody Production

 Tel: 1-631-559-9269 1-516-512-3133

 Email: info@creative-biomart.com  Fax: 1-631-938-8127

 45-1 Ramsey Road, Shirley, NY 11967, USA

Protein Array

Notes	Best use within three months from the date of receipt of this protein.
Storage	Store at -80 centigrade. Aliquot to avoid repeated freezing and thawing.
Storage Buffer	50 mM Tris-HCl, 10 mM reduced Glutathione, pH=8.0 in the elution buffer.

GENE INFORMATION

Gene Name	CTLA4 cytotoxic T-lymphocyte-associated protein 4 [Homo sapiens]
Official Symbol	CTLA4
Synonyms	CTLA4; cytotoxic T-lymphocyte-associated protein 4; celiac disease 3 , CELIAC3; cytotoxic T-lymphocyte protein 4; CD; CD28; CD152; GSE; ICOS; CD152 isoform; celiac disease 3; cytotoxic T-lymphocyte antigen 4; cytotoxic T-lymphocyte-associated antigen 4; cytotoxic T-lymphocyte-associated serine esterase-4; cytotoxic T lymphocyte associated antigen 4 short spliced form; ligand and transmembrane spliced cytotoxic T lymphocyte associated antigen 4; GRD4; CTLA-4; IDDM12; CELIAC3;
Gene ID	1493
mRNA Refseq	NM_001037631
Protein Refseq	NP_001032720
MIM	123890
UniProt ID	P16410

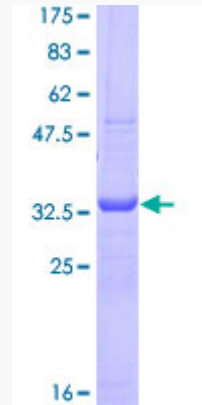
 Tel: 1-631-559-9269 1-516-512-3133

 Email: info@creative-biomart.com  Fax: 1-631-938-8127

 45-1 Ramsey Road, Shirley, NY 11967, USA

Quality Control

Testing:



12.5% SDS-PAGE Stained with Coomassie Blue.

 Tel: 1-631-559-9269 1-516-512-3133

 Email: info@creative-biomart.com  Fax: 1-631-938-8127

 45-1 Ramsey Road, Shirley, NY 11967, USA