

Recombinant Human CTLA4 protein, Fc-tagged

Cat. No. CTLA4-2234H Lot. No. (See product label)

SPECIFICATION

Product Overview Recombinant Human CTLA4 protein (Ala37-Ser160), fused to human IgG1 Fc tag at C-terminus, was expressed in human 293 cells (HEK293).

Species Human

Source HEK293

ProteinLength 124

Description CTLA-4 (Cytotoxic T-Lymphocyte Antigen 4) is also known as CD152 (Cluster of differentiation 152), is a protein receptor that downregulates the immune system. CTLA4 is a member of the immunoglobulin superfamily, which is expressed on the surface of Helper T cells and transmits an inhibitory signal to T cells. The protein contains an extracellular V domain, a transmembrane domain, and a cytoplasmic tail. Alternate splice variants, encoding different isoforms. CTLA4 is similar to the T-cell co-stimulatory protein, CD28, and both molecules bind to CD80 and CD86, also called B7-1 and B7-2 respectively, on antigen-presenting cells. CTLA4 transmits an inhibitory signal to T cells, whereas CD28 transmits a stimulatory signal. Intracellular CTLA4 is also found in regulatory T cells and may be important to their function. Fusion proteins of CTLA4 and antibodies (CTLA4-Ig) have been used in clinical trials for rheumatoid arthritis.

Form Lyophilized from 0.22 um filtered solution in Tris with Glycine, Arginine and NaCl, pH7.5, 10% trehalose.

 Tel: 1-631-559-9269 1-516-512-3133

 Email: info@creative-biomart.com  Fax: 1-631-938-8127

 45-1 Ramsey Road, Shirley, NY 11967, USA

Molecular Mass	The protein has a calculated MW of 40.0 kDa. As a result of glycosylation, the protein migrates as 45-55 kDa under reducing (R) condition, and 90 kDa under non-reducing (NR) condition (SDS-PAGE).
Endotoxin	Less than 1.0 EU per ug by the LAL method.
Purity	>98% as determined by SDS-PAGE.
Storage	For long term storage, the product should be stored at lyophilized state at -20 centigrade or lower. Please avoid repeated freeze-thaw cycles. This product is stable after storage at: -20 centigrade to -70 centigrade for 12 months in lyophilized state; -70 centigrade for 3 months under sterile conditions after reconstitution.
Reconstitution	It is recommended that sterile water be added to the vial to prepare a stock solution of 0.2 ug/ul. Centrifuge the vial at 4°C before opening to recover the entire contents.

GENE INFORMATION

Gene Name	CTLA4
Official Symbol	CTLA4
Synonyms	CTLA4; cytotoxic T-lymphocyte-associated protein 4; celiac disease 3 , CELIAC3; cytotoxic T-lymphocyte protein 4; CD; CD28; CD152; GSE; ICOS; CD152 isoform; celiac disease 3; cytotoxic T-lymphocyte antigen 4; cytotoxic T-lymphocyte-associated antigen 4; cytotoxic T-lymphocyte-associated serine esterase-4; cytotoxic T lymphocyte associated antigen 4 short spliced form; ligand and transmembrane spliced cytotoxic T lymphocyte associated antigen 4; GRD4; CTLA-4; IDDM12; CELIAC3

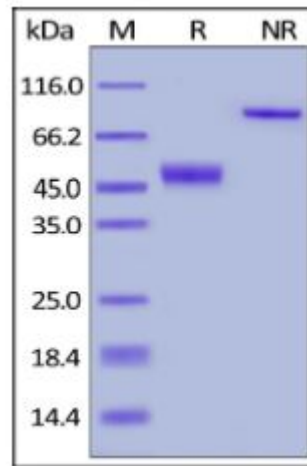
 Tel: 1-631-559-9269 1-516-512-3133

 Email: info@creative-biomart.com  Fax: 1-631-938-8127

 45-1 Ramsey Road, Shirley, NY 11967, USA

Gene ID	1493
mRNA Refseq	NM_001037631
Protein Refseq	NP_001032720
MIM	123890
UniProt ID	P16410

**SDS-PAGE of
CTLA4-2234H**



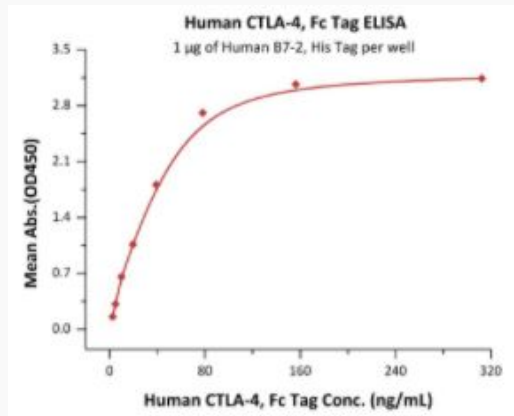
Human CTLA-4, Fc Tag on SDS-PAGE under reducing (R) and non-reducing (NR) conditions. The gel was stained overnight with Coomassie Blue. The purity of the protein is greater than 98%.

Tel: 1-631-559-9269 1-516-512-3133

Email: info@creative-biomart.com Fax: 1-631-938-8127

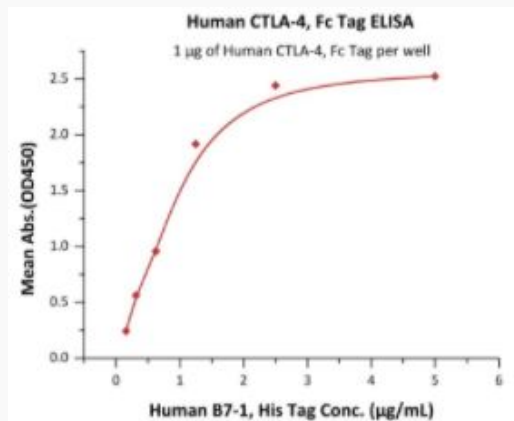
45-1 Ramsey Road, Shirley, NY 11967, USA

**Bioactivity-ELISA of
CTLA4-2234H**



Immobilized Human B7-2, His Tag at 10 µg/mL (100 µL/well) can bind Human CTLA-4, Fc Tag with a linear range of 2-39 ng/mL (QC tested).

**Bioactivity-ELISA of
CTLA4-2234H**



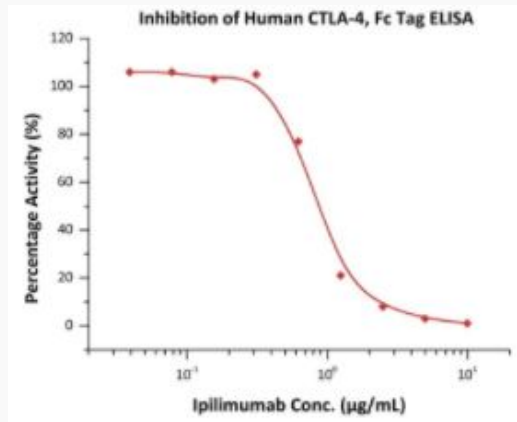
Immobilized Human CTLA-4, Fc Tag at 10 µg/mL (100 µL/well) can bind Human B7-1, His Tag with a linear range of 0.156-1.25 µg/mL (Routinely tested).

Tel: 1-631-559-9269 1-516-512-3133

Email: info@creative-biomart.com Fax: 1-631-938-8127

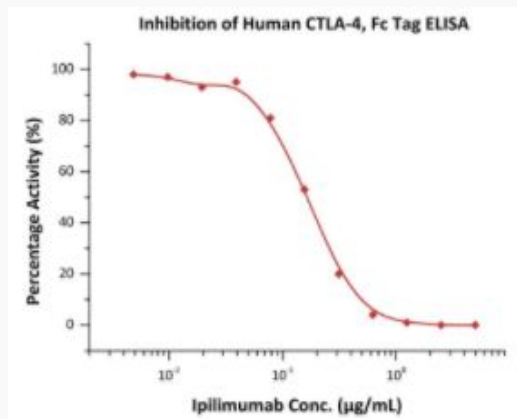
45-1 Ramsey Road, Shirley, NY 11967, USA

**Bioactivity-ELISA of
CTLA4-2234H**



Serial dilutions of Ipilimumab were added into Human CTLA-4, Fc Tag : Biotinylated Human B7-1, Fc,Avitag binding reactions. The half maximal inhibitory concentration (IC50) is 0.8260 µg/mL (Routinely tested).

**Bioactivity-ELISA of
CTLA4-2234H**



Serial dilutions of Ipilimumab were added into Human CTLA-4, Fc Tag: Biotinylated Human B7-2, Fc,Avitag binding reactions. The half maximal inhibitory concentration (IC50) is 0.1701 µg/mL (Routinely tested).

Tel: 1-631-559-9269 1-516-512-3133

Email: info@creative-biomart.com Fax: 1-631-938-8127

45-1 Ramsey Road, Shirley, NY 11967, USA