

# Recombinant Cynomolgus/Rhesus macaque CTLA4 protein, His-tagged

Cat. No. CTLA4-369C Lot. No. (See product label)

## SPECIFICATION

<b>Product Overview</b>	Recombinant Cynomolgus/Rhesus macaque CTLA4 protein (Ala37-Ser160), fused to His tag at C-terminus, was expressed in human 293 cells (HEK293). In the region Ala37-Ser160, the AA sequence of Cynomolgus and Rhesus macaque CTLA4 are homologous.
<b>Species</b>	Cynomolgus/Rhesus macaque
<b>Source</b>	HEK293
<b>ProteinLength</b>	124
<b>Description</b>	<p>CTLA-4 (Cytotoxic T-Lymphocyte Antigen 4) is also known as CD152 (Cluster of differentiation 152), is a protein receptor that downregulates the immune system. CTLA4 is a member of the immunoglobulin superfamily, which is expressed on the surface of Helper T cells and transmits an inhibitory signal to T cells. The protein contains an extracellular V domain, a transmembrane domain, and a cytoplasmic tail. Alternate splice variants, encoding different isoforms. CTLA4 is similar to the T-cell co-stimulatory protein, CD28, and both molecules bind to CD80 and CD86, also called B7-1 and B7-2 respectively, on antigen-presenting cells. CTLA4 transmits an inhibitory signal to T cells, whereas CD28 transmits a stimulatory signal. Intracellular CTLA4 is also found in regulatory T cells and may be important to their function. Fusion proteins of CTLA4 and antibodies (CTLA4-Ig) have been used in clinical trials for rheumatoid arthritis.</p>

 Tel: 1-631-559-9269 1-516-512-3133

 Email: [info@creative-biomart.com](mailto:info@creative-biomart.com)  Fax: 1-631-938-8127

 45-1 Ramsey Road, Shirley, NY 11967, USA

<b>Form</b>	Lyophilized from 0.22 um filtered solution in PBS, pH7.4, 10% trehalose.
<b>Molecular Mass</b>	The protein has a calculated MW of 14.1 kDa. The protein migrates as 19-24 kDa under reducing (R) condition (SDS-PAGE) due to glycosylation.
<b>Endotoxin</b>	Less than 1.0 EU per ug by the LAL method.
<b>Purity</b>	>95% as determined by SDS-PAGE.
<b>Storage</b>	<p>For long term storage, the product should be stored at lyophilized state at -20 centigrade or lower.</p> <p>Please avoid repeated freeze-thaw cycles.</p> <p>This product is stable after storage at:</p> <ul style="list-style-type: none"> <li>-20 centigrade to -70 centigrade for 12 months in lyophilized state;</li> <li>-70 centigrade for 3 months under sterile conditions after reconstitution.</li> </ul>
<b>Reconstitution</b>	It is recommended that sterile water be added to the vial to prepare a stock solution of 0.2 ug/ul. Centrifuge the vial at 4°C before opening to recover the entire contents.

## GENE INFORMATION

<b>Gene Name</b>	CTLA4
<b>Official Symbol</b>	CTLA4
<b>Synonyms</b>	CTLA-4
<b>Gene ID</b>	705673
<b>mRNA Refseq</b>	NM_001044739.1

 Tel: 1-631-559-9269 1-516-512-3133

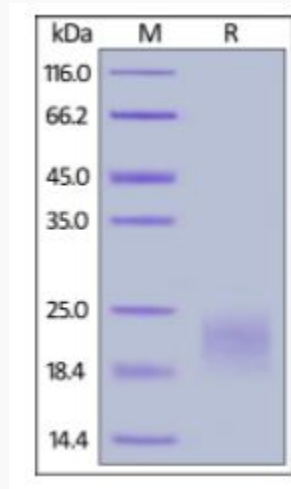
 Email: [info@creative-biomart.com](mailto:info@creative-biomart.com)  Fax: 1-631-938-8127

 45-1 Ramsey Road, Shirley, NY 11967, USA

**Protein Refseq** NP\_001038204.1

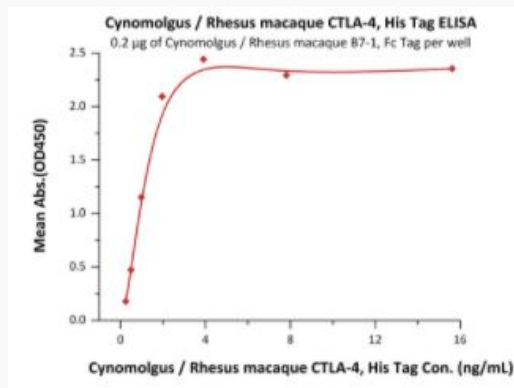
**UniProt ID** Q9BDC4

**SDS-PAGE of  
CTLA4-369C**



Cynomolgus/Rhesus macaque CTLA-4, His Tag on SDS-PAGE under reducing (R) condition. The gel was stained overnight with Coomassie Blue. The purity of the protein is greater than 95%.

**Bioactivity-ELISA of  
CTLA4-369C**



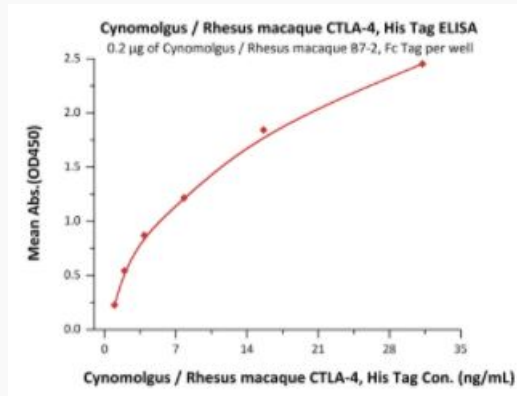
Tel: 1-631-559-9269 1-516-512-3133

Email: [info@creative-biomart.com](mailto:info@creative-biomart.com) Fax: 1-631-938-8127

45-1 Ramsey Road, Shirley, NY 11967, USA

Immobilized Cynomolgus/Rhesus macaque B7-1, Fc Tag at 2 µg/mL (100 µL/well) can bind Cynomolgus /Rhesus macaque CTLA-4, His Tag with a linear range of 0.2-2 ng/mL (QC tested).


**Bioactivity-ELISA of  
CTLA4-369C**



Immobilized Cynomolgus/Rhesus macaque B7-2, Fc Tag at 2 µg/mL (100 µL/well) can bind Cynomolgus/Rhesus macaque CTLA-4, His Tag with a linear range of 4-31 ng/mL (Routinely tested).

 Tel: 1-631-559-9269 1-516-512-3133

 Email: [info@creative-biomart.com](mailto:info@creative-biomart.com)  Fax: 1-631-938-8127

 45-1 Ramsey Road, Shirley, NY 11967, USA