

Recombinant Cynomolgus/Rhesus macaque CTLA4 protein, Fc-tagged

Cat. No. CTLA4-370C Lot. No. (See product label)

SPECIFICATION

Product Overview	Recombinant Cynomolgus/Rhesus macaque CTLA4 protein (Ala37-Ser160), fused to human IgG1 Fc tag at C-terminus, was expressed in human 293 cells (HEK293). In the region Ala37-Ser160, the AA sequence of Cynomolgus and Rhesus macaque CTLA4 are homologous.
Species	Cynomolgus/Rhesus macaque
Source	HEK293
ProteinLength	124
Description	<p>CTLA-4 (Cytotoxic T-Lymphocyte Antigen 4) is also known as CD152 (Cluster of differentiation 152), is a protein receptor that downregulates the immune system. CTLA4 is a member of the immunoglobulin superfamily, which is expressed on the surface of Helper T cells and transmits an inhibitory signal to T cells. The protein contains an extracellular V domain, a transmembrane domain, and a cytoplasmic tail. Alternate splice variants, encoding different isoforms. CTLA4 is similar to the T-cell co-stimulatory protein, CD28, and both molecules bind to CD80 and CD86, also called B7-1 and B7-2 respectively, on antigen-presenting cells. CTLA4 transmits an inhibitory signal to T cells, whereas CD28 transmits a stimulatory signal. Intracellular CTLA4 is also found in regulatory T cells and may be important to their function. Fusion proteins of CTLA4 and antibodies (CTLA4-Ig) have been used in clinical trials for rheumatoid arthritis.</p>

 Tel: 1-631-559-9269 1-516-512-3133

 Email: info@creative-biomart.com  Fax: 1-631-938-8127

 45-1 Ramsey Road, Shirley, NY 11967, USA

Form	Lyophilized from 0.22 um filtered solution in 50 mM Tris, 100 mM Glycine, pH7.5, 10% trehalose.
Molecular Mass	The protein has a calculated MW of 40.0 kDa. As a result of glycosylation, the protein migrates as 45-52 kDa under reducing (R) condition, and 90-105 kDa under non-reducing (NR) condition (SDS-PAGE).
Endotoxin	Less than 1.0 EU per ug by the LAL method.
Purity	>95% as determined by SDS-PAGE.
Storage	<p>For long term storage, the product should be stored at lyophilized state at -20 centigrade or lower.</p> <p>Please avoid repeated freeze-thaw cycles.</p> <p>This product is stable after storage at:</p> <ul style="list-style-type: none"> -20 centigrade to -70 centigrade for 12 months in lyophilized state; -70 centigrade for 3 months under sterile conditions after reconstitution.
Reconstitution	It is recommended that sterile water be added to the vial to prepare a stock solution of 0.2 ug/ul. Centrifuge the vial at 4°C before opening to recover the entire contents.

GENE INFORMATION

Gene Name	CTLA4
Official Symbol	CTLA4
Synonyms	CTLA-4
Gene ID	705673

 Tel: 1-631-559-9269 1-516-512-3133

 Email: info@creative-biomart.com  Fax: 1-631-938-8127

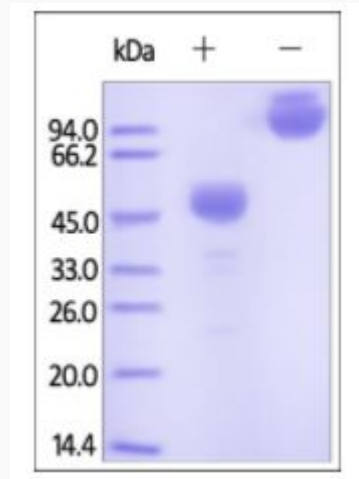
 45-1 Ramsey Road, Shirley, NY 11967, USA

mRNA Refseq [NM_001044739.1](#)

Protein Refseq [NP_001038204.1](#)

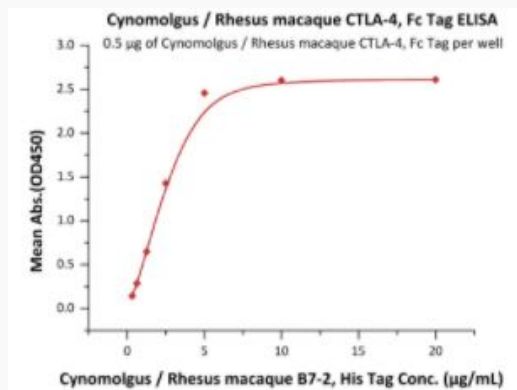
UniProt ID [Q9BDC4](#)

**SDS-PAGE of
CTLA4-370C**



Cynomolgus/Rhesus macaque CTLA-4, Fc Tag on SDS-PAGE under reducing (R) and non-reducing (NR) conditions. The gel was stained overnight with Coomassie Blue. The purity of the protein is greater than 95%.

**Bioactivity-ELISA of
CTLA4-370C**



 Tel: 1-631-559-9269 1-516-512-3133

 Email: info@creative-biomart.com  Fax: 1-631-938-8127

 45-1 Ramsey Road, Shirley, NY 11967, USA



Immobilized Cynomolgus/Rhesus macaque CTLA-4, Fc Tag at 5 µg/mL (100 µL/well) can bind Cynomolgus /Rhesus macaque B7-2, His Tag with a linear range of 0.312-5 µg/mL (QC tested).

 Tel: 1-631-559-9269 1-516-512-3133

 Email: info@creative-biomart.com  Fax: 1-631-938-8127

 45-1 Ramsey Road, Shirley, NY 11967, USA