

## Recombinant Human CTLA4 Protein (Met1-Asp161), C-His tagged

Cat. No. CTLA4-4048H Lot. No. (See product label)

### SPECIFICATION

#### Product Overview

Recombinant human CTLA4 (Met1~Asp161) fused with the C-terminal His tag was expressed in Mammalian cells.

#### Species

Human

#### Source

Mammalian Cells

#### ProteinLength

Met1-Asp161

#### Description

CTLA-4 (Cytotoxic T-Lymphocyte Antigen 4) is also known as CD152 (Cluster of differentiation 152), is a protein receptor that downregulates the immune system. CTLA4 is a member of the immunoglobulin superfamily, which is expressed on the surface of Helper T cells and transmits an inhibitory signal to T cells. The protein contains an extracellular V domain, a transmembrane domain, and a cytoplasmic tail. Alternate splice variants, encoding different isoforms. CTLA4 is similar to the T-cell co-stimulatory protein, CD28, and both molecules bind to CD80 and CD86, also called B7-1 and B7-2 respectively, on antigen-presenting cells. CTLA4 transmits an inhibitory signal to T cells, whereas CD28 transmits a stimulatory signal. Intracellular CTLA4 is also found in regulatory T cells and may be important to their function. Fusion proteins of CTLA4 and antibodies (CTLA4-Ig) have been used in clinical trials for rheumatoid arthritis.

#### Form

Lyophilized powder/frozen liquid

 Tel: 1-631-559-9269 1-516-512-3133

 Email: [info@creative-biomart.com](mailto:info@creative-biomart.com)  Fax: 1-631-938-8127

 45-1 Ramsey Road, Shirley, NY 11967, USA

<b>Molecular Mass</b>	18.51 kDa
<b>Endotoxin</b>	< 1.0 EU/μg of the protein as determined by the LAL method.
<b>Purity</b>	>90% as determined by SDS-PAGE.
<b>Notes</b>	For research use only.
<b>Storage</b>	Use a manual defrost freezer and avoid repeated freeze thaw cycles. Store at 2 to 8 centigrade for one week. Store at -20 to -80 centigrade for twelve months from the date of receipt.
<b>Storage Buffer</b>	Supplied as solution form in 150 mM NaCl, 50 mM Tris-HCl, pH 7.5 or lyophilized from 150 mM NaCl, 50 mM Tris-HCl, pH 7.5.
<b>Reconstitution</b>	Reconstitute in sterile water for a stock solution.
<b>Shipping</b>	They are shipped out with dry ice/blue ice unless customers require otherwise.

## GENE INFORMATION

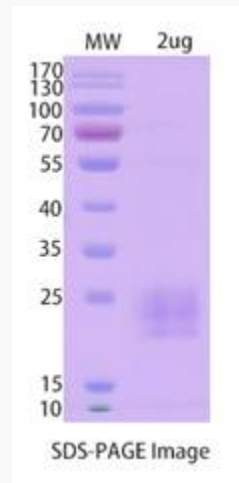
<b>Gene Name</b>	CTLA4 cytotoxic T-lymphocyte-associated protein 4 [ Homo sapiens (human) ]
<b>Official Symbol</b>	CTLA4
<b>Synonyms</b>	CTLA4; cytotoxic T-lymphocyte-associated protein 4; celiac disease 3, CELIAC3; cytotoxic T-lymphocyte protein 4; CD; CD28; CD152; GSE; ICOS; CD152 isoform; celiac disease 3; cytotoxic T-lymphocyte antigen 4; cytotoxic T-lymphocyte-associated antigen 4; cytotoxic T-lymphocyte-associated serine esterase-4; cytotoxic T lymphocyte associated antigen 4 short spliced form; ligand and transmembrane spliced cytotoxic T lymphocyte associated antigen 4; GRD4; CTLA-4; IDDM12;

 Tel: 1-631-559-9269 1-516-512-3133

 Email: [info@creative-biomart.com](mailto:info@creative-biomart.com)  Fax: 1-631-938-8127

 45-1 Ramsey Road, Shirley, NY 11967, USA

CELIAC3;

**Gene ID** 1493**mRNA Refseq** NM\_001037631**Protein Refseq** NP\_001032720**MIM** 123890**UniProt ID** P16410**SDS-PAGE** Tel: 1-631-559-9269 1-516-512-3133 Email: [info@creative-biomart.com](mailto:info@creative-biomart.com)  Fax: 1-631-938-8127 45-1 Ramsey Road, Shirley, NY 11967, USA