

## Recombinant Dog catenin beta 1 Protein, His-tagged

Cat. No. CTNNB1-01H Lot. No. (See product label)

### SPECIFICATION

<b>Product Overview</b>	Recombinant Dog catenin beta 1 Protein with N-terminal His6 fusion tag was expressed in E. coli.
<b>Species</b>	Dog
<b>Source</b>	E.coli
<b>ProteinLength</b>	788
<b>Description</b>	<p>Key downstream component of the canonical Wnt signaling pathway (By similarity). In the absence of Wnt, forms a complex with AXIN1, AXIN2, APC, CSNK1A1 and GSK3B that promotes phosphorylation on N-terminal Ser and Thr residues and ubiquitination of CTNNB1 via BTRC and its subsequent degradation by the proteasome. In the presence of Wnt ligand, CTNNB1 is not ubiquitinated and accumulates in the nucleus, where it acts as a coactivator for transcription factors of the TCF/LEF family, leading to activate Wnt responsive genes (By similarity).</p> <p>Involved in the regulation of cell adhesion, as component of an E-cadherin:catenin adhesion complex (By similarity).</p> <p>Acts as a negative regulator of centrosome cohesion. Involved in the CDK2/PTPN6/CTNNB1/CEACAM1 pathway of insulin internalization. Blocks anoikis of malignant kidney and intestinal epithelial cells and promotes their anchorage-independent growth by down-regulating DAPK2. Disrupts PML function and PML-NB formation by inhibiting RANBP2-mediated sumoylation of PML (By similarity).</p> <p>Promotes neurogenesis by maintaining sympathetic neuroblasts within the cell cycle.</p>

 Tel: 1-631-559-9269 1-516-512-3133

 Email: [info@creative-biomart.com](mailto:info@creative-biomart.com)  Fax: 1-631-938-8127

 45-1 Ramsey Road, Shirley, NY 11967, USA

Involved in chondrocyte differentiation via interaction with SOX9: SOX9-binding competes with the binding sites of TCF/LEF within CTNNB1, thereby inhibiting the Wnt signaling

**Form** Buffered aqueous solution

**Molecular Mass** 86.5 kDa

**AA Sequence**

MHHHHHHHHATQADLMELDMAMEPDRKAAVSHWQQQSYLDSGIHSGATTTAPSL  
 SGKGNPEEEDVDTTQVLYEWEQGFSSFTQEQQVADIDGQYAMTRAQRVRAAMFP  
 ETLDEGMQIPSTQFDDAAHPTNVQRLAEPSQMLKHAVVNLINYQDDAELATRAIPELT  
 KLLNDEDQVVVNKAAVMVHQLSKKEASRHAIMRSPQMVSIAIVRTMQNTNDVETARC  
 TAGTLHNLSHHREGLLAIFKSGGIPALVKMLGSPVDSVLFYAITTLHNLHLLHQEGAKM  
 AVRLAGGLQKMMVALLNKTNVKFLAITTDCLQILAYGNQESKLIILASGGPQALVNIMRT  
 YTYEKLLWTTSRVLKVLVSVCSNKAIVEAGGMQALGLHLTDPSQRLVQNCLWTLR  
 NLSDAATKQEGMEGLLGLTLVQLLGSDDINVVTCAGILSNLTCNNYKNKMMVCQVG  
 GIEALVRTVLRAGDREDITEPAICALRHLSRHQEAEMAQNAVRLHYGLPVVVKLLHP  
 PSHWPLIKATVGLIRNLALCPANHAPLREQGAIPRLVQLLVRAHQDTQRRTSMGGTQ  
 QQFVEGVRMEEIVEGCTGALHILARDVHNRIVIRGLNTIPLFVQLLYSPIENIQRVAAG  
 VLCELAQDKEAAEAIEAEGATAPLTELHLSRNEGVATYAAAVLFRMSEDKPQDYKKR  
 LSVELTSSLFRTEPMAWNETADLGLDIGAQGEPLGYRQDDPSYRSFHSGGYGQDAL  
 GMDPMMHEHEMGGHHPGADYPVDGLPDLGHAQDLMDGLPPGDSNQLAWFDTD

**Purity** 90% by SDS-PAGE

**Applications** Antigen for antibody production  
 ELISA

**Storage** Store it under sterile conditions at -20 to -80 °C. It is recommended that the protein be aliquoted for optimal storage. Avoid repeated freeze-thaw cycles.

 Tel: 1-631-559-9269 1-516-512-3133

 Email: [info@creative-biomart.com](mailto:info@creative-biomart.com)  Fax: 1-631-938-8127

 45-1 Ramsey Road, Shirley, NY 11967, USA

**Concentration** 0.56 mg.ml

**Storage Buffer** Solution in 50mM Tris, 300mM NaCl, pH 8.0.

## GENE INFORMATION

**Gene Name** CTNNB1

**Official Symbol** CTNNB1

**Synonyms** Catenin beta-1, Beta-catenin

**Gene ID** 477032

**mRNA Refseq** NM\_001137652.1

**Protein Refseq** NP\_001131124.1

**UniProt ID** B6V8E6

## SDS-PAGE

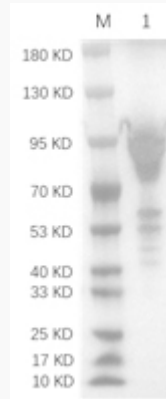


Tel: 1-631-559-9269 1-516-512-3133

Email: [info@creative-biomart.com](mailto:info@creative-biomart.com) Fax: 1-631-938-8127

45-1 Ramsey Road, Shirley, NY 11967, USA

WB



 Tel: 1-631-559-9269 1-516-512-3133

 Email: [info@creative-biomart.com](mailto:info@creative-biomart.com)  Fax: 1-631-938-8127

 45-1 Ramsey Road, Shirley, NY 11967, USA