

# Active Recombinant Human Catenin beta-1 protein, His tagged

Cat. No. CTNNB1-10HFL    Lot. No. (See product label)

## SPECIFICATION

<b>Product Overview</b>	Recombinant Human Catenin beta-1-C-His protein (1-781 aa) was developed from E. coli and has a target region of C-His. For use in research applications.
<b>Species</b>	Human
<b>Source</b>	E.coli
<b>ProteinLength</b>	1-781 aa
<b>Description</b>	The protein encoded by this gene is part of a complex of proteins that constitute adherens junctions (AJs). AJs are necessary for the creation and maintenance of epithelial cell layers by regulating cell growth and adhesion between cells. The encoded protein also anchors the actin cytoskeleton and may be responsible for transmitting the contact inhibition signal that causes cells to stop dividing once the epithelial sheet is complete. Finally, this protein binds to the product of the APC gene, which is mutated in adenomatous polyposis of the colon. Mutations in this gene are a cause of colorectal cancer (CRC), pilomatrixoma (PTR), medulloblastoma (MDB), and ovarian cancer. Alternative splicing results in multiple transcript variants.
<b>Tag</b>	C-His
<b>Bio-activity</b>	Measured by its binding ability in a functional ELISA. Immobilized Human CD31 at 1 µg/mL (100 µL/well) can bind Human CTNNB1 with a linear range of 0.3-4.9 µg/mL.
<b>Storage Buffer</b>	Lyophilized from a 0.22 µm filtered solution of 50mM TRIS, 150mM NaCl, pH 8.0.

 Tel: 1-631-559-9269    1-516-512-3133

 Email: [info@creative-biomart.com](mailto:info@creative-biomart.com)     Fax: 1-631-938-8127

 45-1 Ramsey Road, Shirley, NY 11967, USA

Contact us for customized product form or formulation.

## GENE INFORMATION

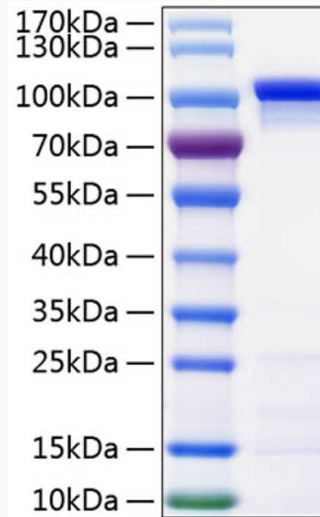
<b>Gene Name</b>	CTNNB1 catenin (cadherin-associated protein), beta 1, 88kDa [ Homo sapiens (human) ]
<b>Official Symbol</b>	CTNNB1
<b>Synonyms</b>	CTNNB1; catenin (cadherin-associated protein), beta 1, 88kDa; catenin (cadherin associated protein), beta 1 (88kD) , CTNNB; catenin beta-1; beta catenin; CTNNB; FLJ25606; FLJ37923; DKFZp686D02253
<b>Gene ID</b>	1499
<b>mRNA Refseq</b>	NM_001098209
<b>Protein Refseq</b>	NP_001091679
<b>MIM</b>	116806
<b>UniProt ID</b>	P35222

 Tel: 1-631-559-9269 1-516-512-3133

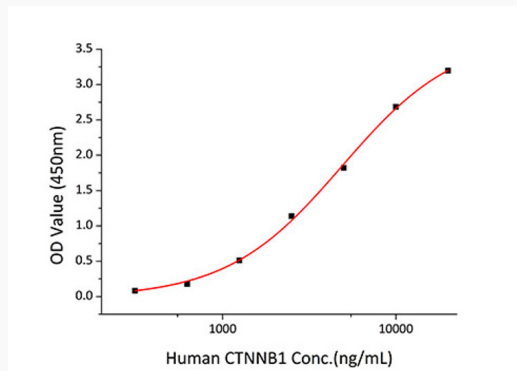
 Email: [info@creative-biomart.com](mailto:info@creative-biomart.com)  Fax: 1-631-938-8127

 45-1 Ramsey Road, Shirley, NY 11967, USA

**SDS-PAGE**



**Biological Activity**



 Tel: 1-631-559-9269 1-516-512-3133

 Email: [info@creative-biomart.com](mailto:info@creative-biomart.com)  Fax: 1-631-938-8127

 45-1 Ramsey Road, Shirley, NY 11967, USA