

## Recombinant Human CTNNB1 Protein (2-781 aa), GST-tagged

Cat. No. CTNNB1-1174H Lot. No. (See product label)

### SPECIFICATION

**Product Overview** Recombinant Human CTNNB1 Protein (2-781 aa) is produced by E. coli expression system. This protein is fused with a GST tag at the N-terminal. Research Area: Cell Adhesion. Protein Description: Full Length of Mature Protein.

**Species** Human

**Source** E.coli

**ProteinLength** 2-781 aa

**Description** Key downstream component of the canonical Wnt signaling pathway. In the absence of Wnt, forms a complex with AXIN1, AXIN2, APC, CSNK1A1 and GSK3B that promotes phosphorylation on N-terminal Ser and Thr residues and ubiquitination of CTNNB1 via BTRC and its subsequent degradation by the proteasome. In the presence of Wnt ligand, CTNNB1 is not ubiquitinated and accumulates in the nucleus, where it acts as a coactivator for transcription factors of the TCF/LEF family, leading to activate Wnt responsive genes. Involved in the regulation of cell adhesion. Acts as a negative regulator of centrosome cohesion. Involved in the CDK2/PTPN6/CTNNB1/CEACAM1 pathway of insulin internalization. Blocks anoikis of malignant kidney and intestinal epithelial cells and promotes their anchorage-independent growth by down-regulating DAPK2. Disrupts PML function and PML-NB formation by inhibiting RANBP2-mediated sumoylation of PML . Promotes neurogenesis by maintaining sympathetic neuroblasts within the cell cycle.

 Tel: 1-631-559-9269 1-516-512-3133

 Email: [info@creative-biomart.com](mailto:info@creative-biomart.com)  Fax: 1-631-938-8127

 45-1 Ramsey Road, Shirley, NY 11967, USA

<b>Form</b>	Tris-based buffer,50% glycerol
<b>Molecular Mass</b>	112.4 kDa
<b>AA Sequence</b>	<p>ATQADLMELDMAMEPDRKAAVSHWQQQSYLDSGIHSGATTTAPSLSGKGNPEEED  VDTSQVLYEWEQGFSSQFTQEQQVADIDGGQYAMTRAQRVRAAMFPETLDEGMQIPS  TQFDAAHPTNVQRLAEPSQMLKHAVVNLINYQDDAELATRAIPELTKLLNDEDQVVV  NKAAVMVHQLSKKEASRHAIMRSPQMVSAIVRTMQNTNDVETARCTAGTLHNLSSH  REGLLAIFKSGGIPALVKMLGSPVDSVLFYAITTLHNLLLHQEGAKMAVRLAGGLQKM  VALLNKTNVKFLAITTDCLQILAYGNQESKLILASGGPQALVNIMRTYTYEKLLWTTT  RVLKVLVSVCSNKAIVEAGGMQALGLHLTDPSQRLVQNCLWTLRNLSDAATKQEG  MEGLLGLTLVQLLGSDDINVVTCAAGILSNLTCNNYKNKMMVCQVGGIEALVRTVLR  GDREDITEPAICALRHLTSRHQEAEMAQNAVRLHYGLPVVVKLLHPPSHWPLIKATV  GLIRNLALCPANHAPLREQGAIPLVQLLVRAHQDTQRRTSMGGTQQQFVEGVRME  EIVEGCTGALHILARDVHNRIVIRGLNTIPLFVQLLYSPIENIQRVAAGVLCELAQDKEA  AEAIEAEGATAPLTELLHSRNEGVATYAAAVLFRMSEDKPQDYKKRSLVELTSSLFR  TEPMAWNETADLGLDIGAQGEPLGYRQDDPSYRSFHSGGYGQDALGMDPMMMEHE  MGGHHPGADYPVDGLPDLGHAQDLMDGLPPGDSNQLAWFDTDL</p>
<b>Purity</b>	> 90% as determined by SDS-PAGE.
<b>Notes</b>	Repeated freezing and thawing is not recommended. Store working aliquots at 4 centigrade for up to one week.
<b>Storage</b>	The shelf life is related to many factors, storage state, buffer ingredients, storage temperature and the stability of the protein itself. Generally, the shelf life of liquid form is 6 months at -20 centigrade/-80 centigrade. The shelf life of lyophilized form is 12 months at -20 centigrade/-80 centigrade.
<b>Concentration</b>	A hardcopy of COA with reconstitution instruction is sent along with the products.

 Tel: 1-631-559-9269 1-516-512-3133

 Email: [info@creative-biomart.com](mailto:info@creative-biomart.com)  Fax: 1-631-938-8127

 45-1 Ramsey Road, Shirley, NY 11967, USA

Please refer to it for detailed information.

## GENE INFORMATION

**Gene Name** CTNNB1 catenin (cadherin-associated protein), beta 1, 88kDa [ Homo sapiens ]

**Official Symbol** CTNNB1

**Synonyms** CTNNB1; beta catenin; CTNNB; FLJ25606; FLJ37923; DKFZp686D02253;

**Gene ID** 1499

**mRNA Refseq** NM\_001098209

**Protein Refseq** NP\_001091679

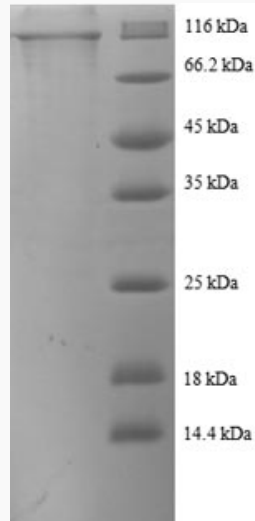
**MIM** 116806

**UniProt ID** P35222

 Tel: 1-631-559-9269 1-516-512-3133

 Email: [info@creative-biomart.com](mailto:info@creative-biomart.com)  Fax: 1-631-938-8127

 45-1 Ramsey Road, Shirley, NY 11967, USA



(Tris-Glycine gel) Discontinuous SDS-PAGE (reduced) with 5% enrichment gel and 15% separation gel.

 Tel: 1-631-559-9269 1-516-512-3133

 Email: [info@creative-biomart.com](mailto:info@creative-biomart.com)  Fax: 1-631-938-8127

 45-1 Ramsey Road, Shirley, NY 11967, USA