

## Recombinant Human CTNNB1, GST-tagged

Cat. No. CTNNB1-1441H Lot. No. (See product label)

### SPECIFICATION

<b>Product Overview</b>	Recombinant full-length human Catenin beta was expressed by baculovirus in <i>Sf9</i> insect cells using an N-terminal GST tag. MW = 115kDa.
<b>Species</b>	Human
<b>Source</b>	Sf9 Cells
<b>Description</b>	<p><math>\beta</math>-catenins are cytoplasmic proteins that are ubiquitously expressed. These proteins associate with E-cadherin at cellular junctions. <math>\beta</math>-catenin interacts with TCF and LEF transcription factors and is an essential member of the Wingless-Wnt signal transduction pathway. The adenomatous polyposis coli (APC) tumor-suppressor protein, together with Axin and GSK3<math>\beta</math>, form a Wnt-regulated signaling complex that mediates phosphorylation-dependent degradation of <math>\beta</math>-catenin by the proteasome. APC and Siah-1 mediate a novel <math>\beta</math>-catenin degradation pathway linking p53 activation to cell cycle control. Activating mutations in the human <math>\beta</math>-catenin gene have been found in human colon cancer and melanomas.</p>
<b>Sequence</b>	Full-length.
<b>Applications</b>	Western Blot.
<b>Storage And Stability</b>	Store product at -70°C. For optimal storage, aliquot target into smaller quantities after centrifugation and store at recommended temperature. For most favorable performance, avoid repeated handling and multiple freeze/thaw cycles.

 Tel: 1-631-559-9269 1-516-512-3133

 Email: [info@creative-biomart.com](mailto:info@creative-biomart.com)  Fax: 1-631-938-8127

 45-1 Ramsey Road, Shirley, NY 11967, USA

## GENE INFORMATION

**Gene Name** CTNNB1 catenin (cadherin-associated protein), beta 1, 88kDa [ Homo sapiens ]

**Synonyms** CTNNB1; catenin (cadherin-associated protein), beta 1, 88kDa; CTNNB; FLJ25606; FLJ37923; DKFZp686D02253; beta-catenin; Catenin beta-1; Beta-catenin

**Gene ID** 1499

**mRNA Refseq** NM\_001098209

**Protein Refseq** NP\_001091679

**MIM** 116806

**UniProt ID** P35222

**Chromosome Location** 3p21

**Pathway** Adherens junction; Arrhythmogenic right ventricular cardiomyopathy (ARVC); Basal cell carcinoma; Colorectal cancer; Endometrial cancer; Focal adhesion; Leukocyte transendothelial migration; Melanogenesis; Pathogenic Escherichia coli infection; Pathways in cancer; Prostate cancer; Thyroid cancer; Tight junction; Wnt signaling pathway; Apoptosis; Cell-cell adhesion systems; Signaling by Wnt

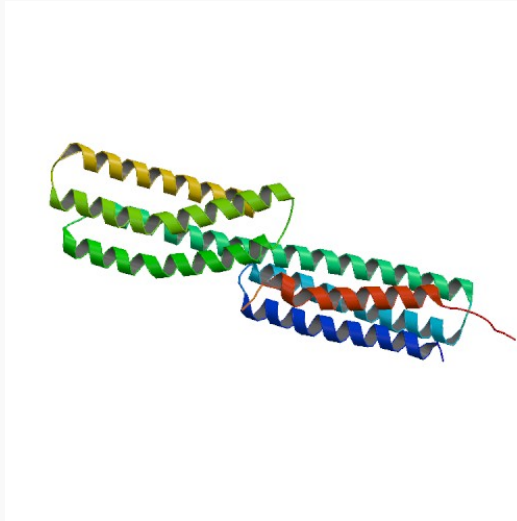
**Function** I-SMAD binding; alpha-catenin binding; androgen receptor binding; cadherin binding; chromatin binding; double-stranded DNA binding; kinase binding; promoter binding; protein C-terminus binding; protein phosphatase binding; signal transducer activity; transcription coactivator activity; transcription factor activity; transcription factor binding

 Tel: 1-631-559-9269 1-516-512-3133

 Email: [info@creative-biomart.com](mailto:info@creative-biomart.com)  Fax: 1-631-938-8127

 45-1 Ramsey Road, Shirley, NY 11967, USA

PDB rendering based  
on 1dow.



 Tel: 1-631-559-9269 1-516-512-3133

 Email: [info@creative-biomart.com](mailto:info@creative-biomart.com)  Fax: 1-631-938-8127

 45-1 Ramsey Road, Shirley, NY 11967, USA