

Recombinant Human CTNNB1 Protein, GST-tagged

Cat. No. CTNNB1-2082H Lot. No. (See product label)

SPECIFICATION

Product Overview	Human CTNNB1 full-length ORF (XP_001133675.1, 1 a.a. - 781 a.a.) recombinant protein with GST-tag at N-terminal.
Species	Human
Source	Wheat Germ
Description	The protein encoded by this gene is part of a complex of proteins that constitute adherens junctions (AJs). AJs are necessary for the creation and maintenance of epithelial cell layers by regulating cell growth and adhesion between cells. The encoded protein also anchors the actin cytoskeleton and may be responsible for transmitting the contact inhibition signal that causes cells to stop dividing once the epithelial sheet is complete. Finally, this protein binds to the product of the APC gene, which is mutated in adenomatous polyposis of the colon. Mutations in this gene are a cause of colorectal cancer (CRC), pilomatixoma (PTR), medulloblastoma (MDB), and ovarian cancer. Alternative splicing results in multiple transcript variants. [provided by RefSeq, Aug 2016]
Molecular Mass	111.9 kDa
AA Sequence	MATQADLMELDMAMEPDRKAAVSHWQQQSYLDSGIHSGATTTAPSLSGKGNPEEE DVDTSQVLYEWEQGFSSFTQEQVADIDGQYAMTRAQRVRAAMFPETLDEGMQIP STQFDDAAHPTNVQRLAEPQMLKHAVVNLINYQDDAELATRAIPELTKLLNDEDQVV VNKAAVMVHQLSKKEASRHAIMRSPQM/SAIVRTMQNTNDVETARCTAGTLHNLSH

 Tel: 1-631-559-9269 1-516-512-3133

 Email: info@creative-biomart.com  Fax: 1-631-938-8127

 45-1 Ramsey Road, Shirley, NY 11967, USA

HREGLLAIFKSGGIPALVKMLGSPVDSVLFYAITTLHNLLHQEGAKMAVRLAGGLQK
 MVALLNKTNVKFLAITTDCLQILAYGNQESKLIILASGGPQALVNMIMRTYTYEKLLWTT
 SRVLKVLVSVCSNKPAIVEAGGMQALGLHLTDPSQRLVQNCLWTLRNLSDAATKQE
 GMEGLLGLTLVQLLGSDDINVVCAAGILSNLTCNNYKNKMMVCQVGGIEALVRTVLR
 AGDREDITEPAICALRHLSRHQEAEMAQNAVRLHYGLPVVVKLLHPPSHWPLIKAT
 VGLIRNLALCPANHAPLREQGAIPRLVQLLVRAHQDTQRRTSMGGTQQQFVEGVVM
 EEIVEGCTGALHILARDVHNRIVIRGLNTIPLFVQLLYSPIENIQRVAAGVLCELAQDKE
 AAEAIEAEGATAPLSELLHSRNEGVATYAAAVLFRMSEDKPKQDYKKRLSVELTSSLF
 RTEPMAWNETADLGLDIGAQGEPLGYRQDDPSYRSFHSGGYGQDALGMDPMMEH
 EMGGHHPGADYPVDGLPDLGHAQDLMDGLPPGDSNQLAWFDTDL

Applications	Enzyme-linked Immunoabsorbent Assay Western Blot (Recombinant protein) Antibody Production Protein Array
Notes	Best use within three months from the date of receipt of this protein.
Storage	Store at -80 centigrade. Aliquot to avoid repeated freezing and thawing.
Storage Buffer	50 mM Tris-HCl, 10 mM reduced Glutathione, pH=8.0 in the elution buffer.

GENE INFORMATION

Gene Name	CTNNB1 catenin (cadherin-associated protein), beta 1, 88kDa [Homo sapiens]
Official Symbol	CTNNB1
Synonyms	CTNNB1; catenin (cadherin-associated protein), beta 1, 88kDa; catenin (cadherin associated protein), beta 1 (88kD) , CTNNB; catenin beta-1; beta catenin; CTNNB; FLJ25606; FLJ37923; DKFZp686D02253;

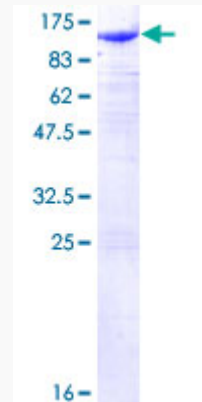
 Tel: 1-631-559-9269 1-516-512-3133

 Email: info@creative-biomart.com  Fax: 1-631-938-8127

 45-1 Ramsey Road, Shirley, NY 11967, USA

Gene ID	1499
mRNA Refseq	NM_001098209
Protein Refseq	NP_001091679
MIM	116806
UniProt ID	P35222

**Quality Control
Testing:**



12.5% SDS-PAGE Stained with Coomassie Blue.

 Tel: 1-631-559-9269 1-516-512-3133

 Email: info@creative-biomart.com  Fax: 1-631-938-8127

 45-1 Ramsey Road, Shirley, NY 11967, USA