

Recombinant Human CTRB1 Protein (Ile34-Ala261), N-His tagged

Cat. No. CTRB1-1879H Lot. No. (See product label)

SPECIFICATION

Product Overview	Recombinant human CTRB1 (Ile34-Ala261) fused with N-His tag was expressed in E. coli.
Species	Human
Source	E.coli
ProteinLength	Ile34-Ala261
Form	Lyophilized powder/frozen liquid
Molecular Mass	26.49 kDa
Purity	>90% as determined by SDS-PAGE
Notes	For research use only.
Storage	Use a manual defrost freezer and avoid repeated freeze thaw cycles. Store at 2 to 8 centigrade for one week. Store at -20 to -80 centigrade for twelve months from the date of receipt.
Storage Buffer	0.01M PBS, pH 7.4, 0.02% NLS
Reconstitution	Reconstitute in sterile water for a stock solution.

 Tel: 1-631-559-9269 1-516-512-3133

 Email: info@creative-biomart.com  Fax: 1-631-938-8127

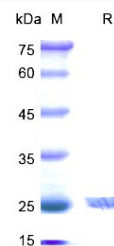
 45-1 Ramsey Road, Shirley, NY 11967, USA

Shipping

They are shipped out with dry ice/blue ice unless customers require otherwise.

GENE INFORMATION

Gene Name	CTRB1 chymotrypsinogen B1 [Homo sapiens (human)]
Official Symbol	CTRB1
Synonyms	CTRB1; chymotrypsinogen B1; CTRB; chymotrypsinogen B; FLJ42412; MGC88037;
Gene ID	1504
mRNA Refseq	NM_001906
Protein Refseq	NP_001897
MIM	118890
UniProt ID	P17538

SDS-PAGE


 Tel: 1-631-559-9269 1-516-512-3133

 Email: info@creative-biomart.com  Fax: 1-631-938-8127

 45-1 Ramsey Road, Shirley, NY 11967, USA