

Recombinant Human CTRB1 Protein, GST-tagged

Cat. No. CTRB1-2094H Lot. No. (See product label)

SPECIFICATION

Product Overview	Human CTRB1 full-length ORF (AAH05385.1, 1 a.a. - 263 a.a.) recombinant protein with GST-tag at N-terminal.
Species	Human
Source	Wheat Germ
Description	This gene encodes a member of the serine protease family of enzymes and forms a principal precursor of the pancreatic proteolytic enzymes. The encoded preproprotein is synthesized in the acinar cells of the pancreas and secreted into the small intestine where it undergoes proteolytic activation to generate a functional enzyme. This gene is located adjacent to a related chymotrypsinogen gene. This gene encodes distinct isoforms, some or all of which may undergo similar processing to generate the mature protein. [provided by RefSeq, Jul 2016]
Molecular Mass	54.56 kDa
AA Sequence	MAFLWLLSCWALLGTTFGCGVPAIHPVLSGLSRIVNGEDAVPGSWPWQVSLQDKT GFHFCCGSLISEDWVVTAAHCGVRTSDVVVAGEFDQGSDEENIQVLKIAKVFKNPKF SILTVNNDITLLKLATPARFSQTVSAVCLPSADDDFPAGTLCATTGWGKTKYNANKTP DKLQQAALPLLSNAECKKSWGRRITDVMICAGASGVSSCMGDSGGPLVCQKDGAW TLVGIVSWGSDTCSTSSPGVYARVTKLIPWVQKILAAAN
Applications	Enzyme-linked Immunoabsorbent Assay Western Blot (Recombinant protein)

 Tel: 1-631-559-9269 1-516-512-3133

 Email: info@creative-biomart.com  Fax: 1-631-938-8127

 45-1 Ramsey Road, Shirley, NY 11967, USA



Antibody Production
Protein Array

Notes

Best use within three months from the date of receipt of this protein.

Storage

Store at -80 centigrade. Aliquot to avoid repeated freezing and thawing.

Storage Buffer

50 mM Tris-HCl, 10 mM reduced Glutathione, pH=8.0 in the elution buffer.

GENE INFORMATION

Gene Name

[CTRB1 chymotrypsinogen B1 \[Homo sapiens \]](#)

Official Symbol

[CTRB1](#)

Synonyms

CTRB1; chymotrypsinogen B1; CTRB; chymotrypsinogen B; FLJ42412; MGC88037;

Gene ID

[1504](#)

mRNA Refseq

[NM_001906](#)

Protein Refseq

[NP_001897](#)

MIM

[118890](#)

UniProt ID

[P17538](#)

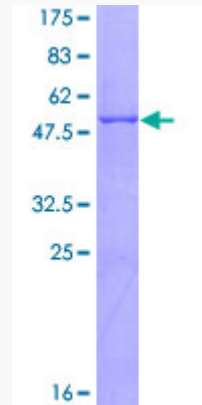
Tel: 1-631-559-9269 1-516-512-3133

Email: info@creative-biomart.com Fax: 1-631-938-8127

45-1 Ramsey Road, Shirley, NY 11967, USA

Quality Control

Testing:



12.5% SDS-PAGE Stained with Coomassie Blue.

 Tel: 1-631-559-9269 1-516-512-3133

 Email: info@creative-biomart.com  Fax: 1-631-938-8127

 45-1 Ramsey Road, Shirley, NY 11967, USA