

Recombinant Human CTRC Protein (Cys17-Leu268), C-His tagged

Cat. No. CTRC-1720H Lot. No. (See product label)

SPECIFICATION

Product Overview	Recombinant human CTRC (Cys17-Leu268) fused with C-terminal His tag was expressed in Mammalian cells.
Species	Human
Source	Mammalian Cells
ProteinLength	Cys17-Leu268
Form	Lyophilized powder/frozen liquid
Molecular Mass	27.72 kDa
Purity	>90% as determined by SDS-PAGE
Notes	For research use only.
Storage	Use a manual defrost freezer and avoid repeated freeze thaw cycles. Store at 2 to 8 centigrade for one week. Store at -20 to -80 centigrade for twelve months from the date of receipt.
Storage Buffer	Supplied as solution form in PBS or lyophilized from PBS.
Reconstitution	Reconstitute in sterile water for a stock solution.

 Tel: 1-631-559-9269 1-516-512-3133

 Email: info@creative-biomart.com  Fax: 1-631-938-8127

 45-1 Ramsey Road, Shirley, NY 11967, USA

Shipping

They are shipped out with dry ice/blue ice unless customers require otherwise.

GENE INFORMATION**Gene Name**

CTRC chymotrypsin C (caldecrin) [Homo sapiens (human)]

Official Symbol

CTRC

Synonyms

CTRC; chymotrypsin C (caldecrin); chymotrypsin-C; CLCR; ELA4; elastase 4; caldecrin; elastase IV; serum calcium decreasing factor;

Gene ID

11330

mRNA Refseq

NM_007272

Protein Refseq

NP_009203

MIM

601405

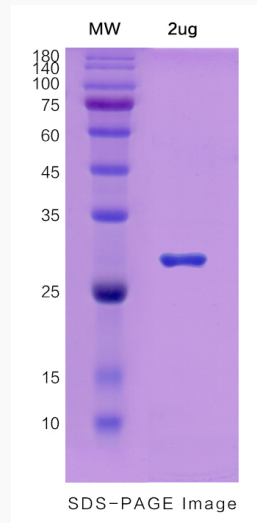
UniProt ID

Q99895

 Tel: 1-631-559-9269 1-516-512-3133 Email: info@creative-biomart.com  Fax: 1-631-938-8127 45-1 Ramsey Road, Shirley, NY 11967, USA



SDS-PAGE



Tel: 1-631-559-9269 1-516-512-3133

Email: info@creative-biomart.com Fax: 1-631-938-8127

45-1 Ramsey Road, Shirley, NY 11967, USA