

Recombinant Human CTRC Protein, GST-tagged

Cat. No. CTRC-2096H Lot. No. (See product label)

SPECIFICATION

| | |
|-------------------------|--|
| Product Overview | Human CTRC full-length ORF (NP_009203.2, 1 a.a. - 268 a.a.) recombinant protein with GST-tag at N-terminal. |
| Species | Human |
| Source | Wheat Germ |
| Description | This gene encodes a member of the peptidase S1 family. The encoded protein is a serum calcium-decreasing factor that has chymotrypsin-like protease activity. Alternatively spliced transcript variants have been observed, but their full-length nature has not been determined. [provided by RefSeq, Jul 2008] |
| Molecular Mass | 55.9 kDa |
| AA Sequence | MLGITVLAALLACASSCGVPSFPPNLSARVVGGEDARPHSWPWQISLQYLKNDTWR HTCGGTLIASNFVLTAAHCISNTRTYRVAVGKNNLEVEDEEGSLFVGVDTIHVHKRW NALLLRNDIALIKLAEHVELSDTIQVACLPEKDSLLPKDYPCYVTGWGRLWTNGPIAD KLQQGLQPVDHATCSRIDWWGFRVKKTMVCAGGDGVISACNGDSSGGLNQCLE NGSWEVFGIVSFGSRRGCNTRKKPVVYTRVSAYIDWINEKMQL |
| Applications | Enzyme-linked Immunoabsorbent Assay Western Blot (Recombinant protein) Antibody Production Protein Array |

 Tel: 1-631-559-9269 1-516-512-3133

 Email: info@creative-biomart.com  Fax: 1-631-938-8127

 45-1 Ramsey Road, Shirley, NY 11967, USA

| | |
|-----------------------|--|
| Notes | Best use within three months from the date of receipt of this protein. |
| Storage | Store at -80 centigrade. Aliquot to avoid repeated freezing and thawing. |
| Storage Buffer | 50 mM Tris-HCl, 10 mM reduced Glutathione, pH=8.0 in the elution buffer. |

GENE INFORMATION

| | |
|------------------------|--|
| Gene Name | CTRC chymotrypsin C (caldecrin) [Homo sapiens] |
| Official Symbol | CTRC |
| Synonyms | CTRC; chymotrypsin C (caldecrin); chymotrypsin-C; CLCR; ELA4; elastase 4; caldecrin; elastase IV; serum calcium decreasing factor; |
| Gene ID | 11330 |
| mRNA Refseq | NM_007272 |
| Protein Refseq | NP_009203 |
| MIM | 601405 |
| UniProt ID | Q99895 |

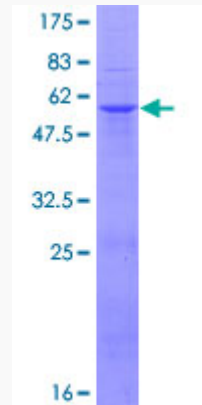
 Tel: 1-631-559-9269 1-516-512-3133

 Email: info@creative-biomart.com  Fax: 1-631-938-8127

 45-1 Ramsey Road, Shirley, NY 11967, USA

Quality Control

Testing:



12.5% SDS-PAGE Stained with Coomassie Blue.

 Tel: 1-631-559-9269 1-516-512-3133

 Email: info@creative-biomart.com  Fax: 1-631-938-8127

 45-1 Ramsey Road, Shirley, NY 11967, USA