

Recombinant Human CTSA Protein, His/GST-tagged

Cat. No. CTSA-489H **Lot. No.** (See product label)

SPECIFICATION

Product Overview	Recombinant Human CTSA(Asp215~Met470) fused with His/GST tag at N-terminal was expressed in E. coli.
Species	Human
Source	E.coli
ProteinLength	Asp215~Met470
Description	his gene encodes a member of the peptidase S10 family of serine carboxypeptidases. Alternative splicing results in multiple transcript variants, at least one of which encodes a preproprotein that is proteolytically processed to generate two chains that comprise the heterodimeric active enzyme. This enzyme possesses deamidase, esterase and carboxypeptidase activities and acts as a scaffold in the lysosomal multienzyme complex. Mutations in this gene are associated with galactosialidosis.
Form	PBS, pH7.4, containing 0.01% SKL, 1mM DTT, 5% Trehalose and Proclin300.
Molecular Mass	61.4kDa
Identity	Reconstitute in PBS or others
Endotoxin	<1.0EU per 1g (determined by the LAL method)
Purity	> 95%

 Tel: 1-631-559-9269 1-516-512-3133

 Email: info@creative-biomart.com  Fax: 1-631-938-8127

 45-1 Ramsey Road, Shirley, NY 11967, USA

Applications	Positive Control; Immunogen; SDS-PAGE; WB. If bio-activity of the protein is needed, please check active protein
Stability	The thermal stability is described by the loss rate. The loss rate was determined by accelerated thermal degradation test, that is, incubate the protein at 37 centigrade for 48h, and no obvious degradation and precipitation were observed. The loss rate is less than 5% within the expiration date under appropriate storage condition.
Storage	Avoid repeated freeze/thaw cycles. Store at 2-8 centigrade for one month. Aliquot and store at -80 centigrade for 12 months.
Reconstitution	Reconstitute in PBS or others
GENE INFORMATION	
Gene Name	CTSA cathepsin A [Homo sapiens]
Official Symbol	CTSA
Synonyms	CTSA; cathepsin A; GSL, PPGB, protective protein for beta galactosidase (galactosialidosis); lysosomal protective protein; carboxypeptidase C; carboxypeptidase Y like kininase; carboxypeptidase L; deamidase; lysosomal carboxypeptidase A; urinary kininase; carboxypeptidase-L; beta-galactosidase 2; protective protein cathepsin A; carboxypeptidase Y-like kininase; beta-galactosidase protective protein; GSL; GLB2; NGBE; PPCA; PPGB;
Gene ID	5476
mRNA Refseq	NM_000308
Protein Refseq	NP_000299

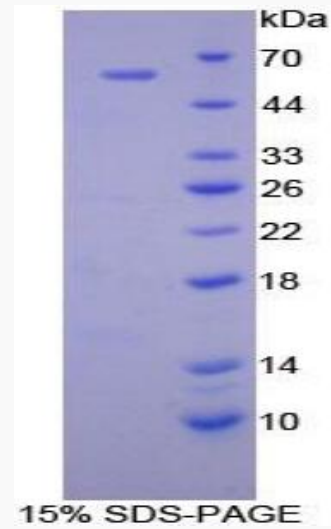
 Tel: 1-631-559-9269 1-516-512-3133

 Email: info@creative-biomart.com  Fax: 1-631-938-8127

 45-1 Ramsey Road, Shirley, NY 11967, USA

MIM 613111

UniProt ID P10619



 Tel: 1-631-559-9269 1-516-512-3133

 Email: info@creative-biomart.com  Fax: 1-631-938-8127

 45-1 Ramsey Road, Shirley, NY 11967, USA