

Recombinant Human CTSB Protein (Leu80-Asp333), N-His tagged

Cat. No. CTSB-1882H Lot. No. (See product label)

SPECIFICATION

Product Overview	Recombinant human CTSB (Leu80-Asp333) fused with N-His tag was expressed in E. coli.
Species	Human
Source	E.coli
ProteinLength	Leu80-Asp333
Form	Lyophilized powder/frozen liquid
Molecular Mass	30.12 kDa
Purity	>90% as determined by SDS-PAGE
Notes	For research use only.
Storage	Use a manual defrost freezer and avoid repeated freeze thaw cycles. Store at 2 to 8 centigrade for one week. Store at -20 to -80 centigrade for twelve months from the date of receipt.
Storage Buffer	0.01M PBS, pH 7.4, 0.02% NLS
Reconstitution	Reconstitute in sterile water for a stock solution.

 Tel: 1-631-559-9269 1-516-512-3133

 Email: info@creative-biomart.com  Fax: 1-631-938-8127

 45-1 Ramsey Road, Shirley, NY 11967, USA

Shipping

They are shipped out with dry ice/blue ice unless customers require otherwise.

GENE INFORMATION
Gene Name

CTSB cathepsin B [Homo sapiens (human)]

Official Symbol

CTSB

Synonyms

CTSB; cathepsin B; cathepsin B1; APP secretase; cysteine protease; amyloid precursor protein secretase; APPS; CPSB;

Gene ID

1508

mRNA Refseq

NM_001908

Protein Refseq

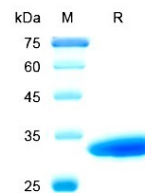
NP_001899

MIM

116810

UniProt ID

P07858

SDS-PAGE


 Tel: 1-631-559-9269 1-516-512-3133

 Email: info@creative-biomart.com  Fax: 1-631-938-8127

 45-1 Ramsey Road, Shirley, NY 11967, USA