

Recombinant Human CTSB protein

Cat. No. CTSB-5252H **Lot. No.** (See product label)

SPECIFICATION

Product Overview	Recombinant Human CTSB protein(P07858)(82-333aa) was expressed in E.coli.
Species	Human
Source	E.coli
ProteinLength	82-333aa
Form	If the delivery form is liquid, the default storage buffer is Tris/PBS-based buffer, 5%-50% glycerol. If the delivery form is lyophilized powder, the buffer before lyophilization is Tris/PBS-based buffer, 6% Trehalose, pH 8.0.
Molecular Mass	27.7 kDa
Purity	Greater than 90% as determined by SDS-PAGE.
Storage	Store at -20°C/-80°C upon receipt, aliquoting is necessary for mutiple use. Avoid repeated freeze-thaw cycles.
Reconstitution	We recommend that this vial be briefly centrifuged prior to opening to bring the contents to the bottom. Please reconstitute protein in deionized sterile water to a concentration of 0.1-1.0 mg/mL. We recommend to add 5-50% of glycerol (final concentration) and aliquot for long-term storage at -20°C/-80°C.
AA Sequence	ASFDAREQWPQCPTIKEIRDQGSCGSCWAFGAVEAISDRICHTNAHVSVEVSAEDL

 Tel: 1-631-559-9269 1-516-512-3133

 Email: info@creative-biomart.com  Fax: 1-631-938-8127

 45-1 Ramsey Road, Shirley, NY 11967, USA

LTCCGSMCGDGCNGGYPAEAWNFWTRKGLVSGGLYESHVGCPRYSIPPCEHHVN
 GSRPPCTGEGDTPKCSKICEPGYSPTYKQDKHYGYNSYSVSNSEKDIMAEIYKNGP
 VEGAFSVYSDFLLYKSGVYQHVTGEMMGGHAIRILGWGVENGTPYWLVANSWNTD
 WGDNGFFKILRGQDHCGIESEVVAGIPRTD

GENE INFORMATION

Gene Name [CTSB cathepsin B \[Homo sapiens \]](#)

Official Symbol [CTSB](#)

Synonyms [CTSB](#); [cathepsin B](#); [cathepsin B1](#); [APP secretase](#); [cysteine protease](#); [amyloid precursor protein secretase](#); [APPS](#); [CPSB](#);

Gene ID [1508](#)

mRNA Refseq [NM_001908](#)

Protein Refseq [NP_001899](#)

MIM [116810](#)

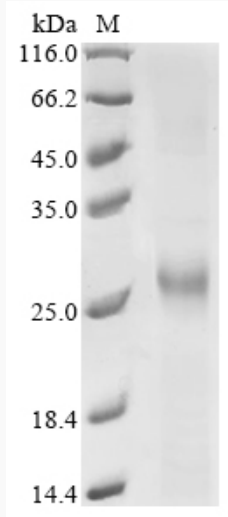
UniProt ID [P07858](#)

 Tel: 1-631-559-9269 1-516-512-3133

 Email: info@creative-biomart.com  Fax: 1-631-938-8127

 45-1 Ramsey Road, Shirley, NY 11967, USA

SDS-PAGE



 Tel: 1-631-559-9269 1-516-512-3133

 Email: info@creative-biomart.com  Fax: 1-631-938-8127

 45-1 Ramsey Road, Shirley, NY 11967, USA