

Native Human Cathepsin B

Cat. No. CTSB-5328H Lot. No. (See product label)

SPECIFICATION

Product Overview	Native Human CTSB was expressed in Human Liver.
Species	Human
Source	Human Liver
ProteinLength	1-339 aa
Description	CTSB, a cysteineproteinase, is located in lysosomes and is involved in tissue degradation and restructuring. Specifically, CTSB is believed to be involved in the intracellular digestion of extracellular proteins taken up by endocytosis.
Form	Frozen liquid in a buffer of 0.05 M Sodium Acetate + 1 mM EDTA, pH 5.0.
Molecular Weight	27.5 kDa
Purity	> 95% by SDS PAGE
Storage	Product is stable at -80°C for 3 years.
OfficialSymbol	CTSB
Pathways	Antigen processing and presentation; Lysosome

GENE INFORMATION

 Tel: 1-631-559-9269 1-516-512-3133

 Email: info@creative-biomart.com  Fax: 1-631-938-8127

 45-1 Ramsey Road, Shirley, NY 11967, USA

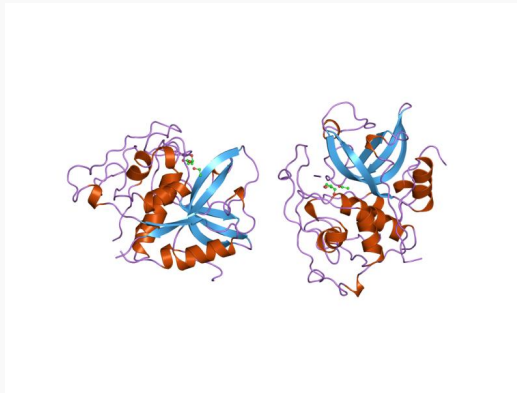
Gene Name	CTSBcathepsin B [Homo sapiens]
Synonyms	CTSB; cathepsin B; APPS; CPSB; cathepsin B1; APP secretase; cycteinprotease; OTTHUMP00000116009; OTTHUMP00000229510; OTTHUMP00000229511; OTTHUMP00000229512; OTTHUMP00000229514; OTTHUMP00000229515; OTTHUMP00000229516; Amyloid precursorprotein secretase; EC 3.4.22.1; Cathepsin B; Cathepsin B1
Gene ID	1508
mRNA Refseq	NM_001908
Protein Refseq	NP_001899
MIM	116810
UniProt ID	P07858
Chromosome Location	8p22
Function	cysteine-typeendopeptidase activity; kininogen binding; peptidase activity; proteinbinding

 Tel: 1-631-559-9269 1-516-512-3133

 Email: info@creative-biomart.com  Fax: 1-631-938-8127

 45-1 Ramsey Road, Shirley, NY 11967, USA

Rendering of 1CSB.



 Tel: 1-631-559-9269 1-516-512-3133

 Email: info@creative-biomart.com  Fax: 1-631-938-8127

 45-1 Ramsey Road, Shirley, NY 11967, USA