

Recombinant Human CTSB Protein, Myc/DDK-tagged, C13 and N15-labeled

Cat. No. CTSB-5932H **Lot. No.** (See product label)

SPECIFICATION

| | |
|-------------------------|---|
| Product Overview | CTSB MS Standard C13 and N15-labeled recombinant protein (NP_001899) with a C-terminal MYC/DDK tag, was expressed in HEK293 cells. |
| Species | Human |
| Source | HEK293 |
| Description | <p>This gene encodes a member of the C1 family of peptidases. Alternative splicing of this gene results in multiple transcript variants. At least one of these variants encodes a preproprotein that is proteolytically processed to generate multiple protein products. These products include the cathepsin B light and heavy chains, which can dimerize to form the double chain form of the enzyme. This enzyme is a lysosomal cysteine protease with both endopeptidase and exopeptidase activity that may play a role in protein turnover. It is also known as amyloid precursor protein secretase and is involved in the proteolytic processing of amyloid precursor protein (APP). Incomplete proteolytic processing of APP has been suggested to be a causative factor in Alzheimer's disease, the most common cause of dementia. Overexpression of the encoded protein has been associated with esophageal adenocarcinoma and other tumors. Multiple pseudogenes of this gene have been identified.</p> |
| Molecular Mass | 37.8 kDa |
| AA Sequence | MWQLWASLCCLLVLANARSRPSFHPLSDELVNYVNKRNNTTWQAGHNFYNVDMSYL |

 Tel: 1-631-559-9269 1-516-512-3133

 Email: info@creative-biomart.com  Fax: 1-631-938-8127

 45-1 Ramsey Road, Shirley, NY 11967, USA

KRLCGTFLGGPKPPQRVMFTEDLKLPA SFDAREQWPQCPTIKEIRDQGSCGSCWA
 FGAVEAISDRICHTNAHVSVEVSAEDLLTCCGSMCGDGCNGGYPAEAWNFWTRKG
 LVSGGLYESHVGC RPYSIPPCEHHVNGSRPPCTGEGDTPKCSKICEPGYSPTYKQD
 KHYGYSYSVSNSEKDIMAEIYKNGPVEGAFSVYSDFLLYKSGVYQHVTGEMMGGH
 AIRILGWGVENGTPYWLVANSWNTDWGDNGFFKILRGQDHCGIESEVVAGIPRTDQ
 YWEKITRTRPLEQKLISEEDLAANDILDYKDDDDKV

Purity > 80% as determined by SDS-PAGE and Coomassie blue staining

Stability Stable for 3 months from receipt of products under proper storage and handling conditions.

Storage Store at -80 centigrade. Avoid repeated freeze-thaw cycles.

Concentration 50 µg/mL as determined by BCA

Storage Buffer 100 mM glycine, 25 mM Tris-HCl, pH 7.3.

GENE INFORMATION

Gene Name [CTSB cathepsin B \[Homo sapiens \(human\) \]](#)

Official Symbol [CTSB](#)

Synonyms CTSB; cathepsin B; cathepsin B1; APP secretase; cysteine protease; amyloid precursor protein secretase; APPS; CPSB;

Gene ID [1508](#)

mRNA Refseq [NM_001908](#)

 Tel: 1-631-559-9269 1-516-512-3133

 Email: info@creative-biomart.com  Fax: 1-631-938-8127

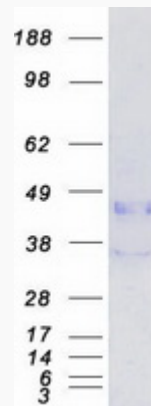
 45-1 Ramsey Road, Shirley, NY 11967, USA

Protein Refseq NP_001899

MIM 116810

UniProt ID P07858

SDS-PAGE



 Tel: 1-631-559-9269 1-516-512-3133

 Email: info@creative-biomart.com  Fax: 1-631-938-8127

 45-1 Ramsey Road, Shirley, NY 11967, USA