

## Active Recombinant Mouse CTSC Protein, His-tagged

Cat. No. CTSC-05M Lot. No. (See product label)

### SPECIFICATION

<b>Product Overview</b>	Recombinant Mouse CTSC Protein, fused to His-tag, was expressed in HEK293.
<b>Species</b>	Mouse
<b>Source</b>	HEK293
<b>ProteinLength</b>	25-462aa
<b>Description</b>	This gene encodes a member of the peptidase C1 (papain) family of cysteine proteases. Alternative splicing results in multiple transcript variants, at least one of which encodes a preproprotein that is proteolytically processed to generate multiple protein products. These products include the dipeptidyl peptidase 1 light, heavy, and exclusion domain chains, which together comprise one subunit of the homotetrameric enzyme. This enzyme has amino dipeptidase activity and may play a role in the activation of granzymes during inflammation. Homozygous knockout mice for this gene exhibit impaired granzyme activation and enhanced survival in a sepsis model.
<b>Form</b>	Liquid in. Phosphate-Buffered Saline (pH 7.4) containing 10% glycerol.
<b>Bio-activity</b>	Specific activity is > 50,000 pmol/min/ug and is defined as the amount of enzyme that hydrolyze 1pmole of Gly-Arg-AMC per minute at pH 6.0 at 37 centigrade.
<b>Molecular Mass</b>	50.5 kDa
<b>AA Sequence</b>	DTPANCTYPD LLGTWVFQVG PRSSRSDINC SVMATEEKV VVHLKCLDTA

 Tel: 1-631-559-9269 1-516-512-3133

 Email: [info@creative-biomart.com](mailto:info@creative-biomart.com)  Fax: 1-631-938-8127

 45-1 Ramsey Road, Shirley, NY 11967, USA

YDELGNSGHF TLIYNQGFEI VLNDYKWFAF FKYEVRGHTA ISYCHETMTG  
 WVHDLVLRNW ACFVGKKVES HIEKVNMAA HLGGLQERYE ERLYTHNHNF  
 VKAINTVQKS WTATAYKEYE KMSLRDLIRR SGHSQRIPRP KPAPMTDEIQ  
 QQILNLPESW DWRNVQGVNY VSPVRNQESC GSCYSFASMG MLEARIRILT  
 NNSQTPILSP QEVVSCSPYA QGCDGGFPYL IAGKYAQDFG VVEESCFPYT  
 AKDSPCKPRE NCLRYSSDY YYVGGFYGGC NEALMKLELV KHGPMVAFAE  
 VHDDFLHYHS GIYHHTGLSD PFNPFELTNH AVLLVGYGRD PVTGIEYWII  
 KNSWGSNWGE SGYFRIRRGT DECAIESIAV AAIPKPL

**Endotoxin** < 1 EU per 1ug of protein (determined by LAL method).

**Purity** > 95%

**Applications** SDS-PAGE, Enzyme Activity

**Notes** For research use only. This product is not intended or approved for human, diagnostics or veterinary use.

**Storage** Can be stored at 2 centigrade to 8 centigrade for 1 week. For long term storage, aliquot and store at -20 centigrade to -80 centigrade. Avoid repeated freezing and thawing cycles.

**Concentration** 0.5 mg/ml

## GENE INFORMATION

**Gene Name** Ctsc cathepsin C [ *Mus musculus* (house mouse) ]

**Official Symbol** CTSC

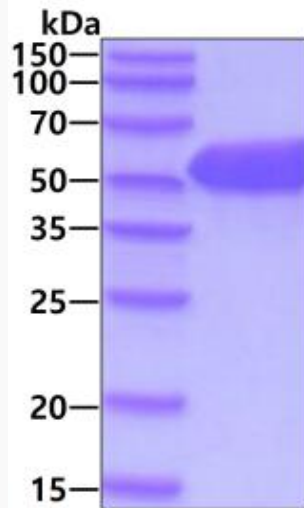
**Synonyms** Cathepsin C; AI047818; CatC; DP; DPP1; DPPI; Cathepsin J; Dipeptidyl peptidase

 Tel: 1-631-559-9269 1-516-512-3133

 Email: [info@creative-biomart.com](mailto:info@creative-biomart.com)  Fax: 1-631-938-8127

 45-1 Ramsey Road, Shirley, NY 11967, USA

isoform 1; Dipeptidyl peptidase 1; Dipeptidyl transferase; CTSC

**Gene ID** 13032**mRNA Refseq** NM\_009982**Protein Refseq** NP\_034112.3**UniProt ID** P97821**SDS-PAGE**

3ug by SDS-PAGE under reducing condition and visualized by coomassie blue stain.

 Tel: 1-631-559-9269 1-516-512-3133 Email: [info@creative-biomart.com](mailto:info@creative-biomart.com)  Fax: 1-631-938-8127 45-1 Ramsey Road, Shirley, NY 11967, USA