

Recombinant Full Length Human CTSC Protein, C-Flag-tagged

Cat. No. CTSC-1863HFL **Lot. No.** (See product label)

SPECIFICATION

| | |
|-------------------------|--|
| Product Overview | Recombinant Full Length Human CTSC Protein, fused to Flag-tag at C-terminus, was expressed in Mammalian cells. |
| Species | Human |
| Source | Mammalian Cells |
| Description | This gene encodes a member of the peptidase C1 family and lysosomal cysteine proteinase that appears to be a central coordinator for activation of many serine proteinases in cells of the immune system. Alternative splicing results in multiple transcript variants, at least one of which encodes a preproprotein that is proteolytically processed to generate heavy and light chains that form a disulfide-linked dimer. A portion of the propeptide acts as an intramolecular chaperone for the folding and stabilization of the mature enzyme. This enzyme requires chloride ions for activity and can degrade glucagon. Defects in the encoded protein have been shown to be a cause of Papillon-Lefevre syndrome, an autosomal recessive disorder characterized by palmoplantar keratosis and periodontitis. |
| Form | 25 mM Tris HCl, pH 7.3, 100 mM glycine, 10% glycerol. |
| Molecular Mass | 49.5 kDa |
| AA Sequence | MGAGPSLLLAALLLLLSGDGAVRCDTPANCTYLDLLGTWVFQVGSSGSQRDVNCSV MGPQEKKVVVYLQK LDTAYDDLGNLGHFTIYNQGFIVLNDYKWFVAFKYEKKEGS KVTTYCNETMTGWVHDVLRNWACFTGK KVGTAENVVYVNTAHLKNSQEKYSNR |

 Tel: 1-631-559-9269 1-516-512-3133

 Email: info@creative-biomart.com  Fax: 1-631-938-8127

 45-1 Ramsey Road, Shirley, NY 11967, USA

LYKYDHNFKAINAIQKSWTATTYMEYETLTLGDMIRRSGGHSR KIPRPKPAPLTAEI
 QQKILHLPTSWDWRNVHGINFVSPVRNQASCSCYFASMGMLEARIRILTNNST
 PILSPQEVVSCSQYAQGCEGGFPYLIAGKYAQDFGLVEEACFPYTGTDSPCKMKED
 CFRYYSSSEYHYVGG FYGGCNEALMKLELVHHGPMVAFAFEVYDDFLHYKKGIIYHHT
 GLRDPFNPFFELTNHAVLLVGYGTDSASGM DYWIVKNSWGTGWGENGYFRIRRG
 DECAIESIAVAATPIPKL TRTRPLEQKLISEEDLAANDILDYKDDDDKV

| | |
|-------------------------|---|
| Purity | > 80% as determined by SDS-PAGE and Coomassie blue staining. |
| Stability | Stable for 12 months from the date of receipt of the product under proper storage and handling conditions. Avoid repeated freeze-thaw cycles. |
| Storage | Store at -80 centigrade. |
| Concentration | >50 ug/mL as determined by microplate BCA method. |
| Preparation | Recombinant protein was captured through anti-DDK affinity column followed by conventional chromatography steps. |
| Protein Families | Druggable Genome, Protease |
| Protein Pathways | Lysosome |
| Full Length | Full L. |

GENE INFORMATION

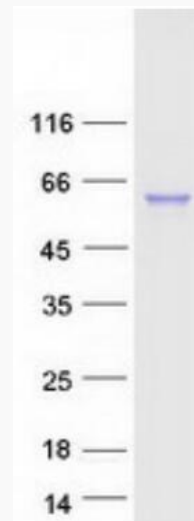
| | |
|------------------------|---|
| Gene Name | CTSC cathepsin C [Homo sapiens (human)] |
| Official Symbol | CTSC |

 Tel: 1-631-559-9269 1-516-512-3133

 Email: info@creative-biomart.com  Fax: 1-631-938-8127

 45-1 Ramsey Road, Shirley, NY 11967, USA

| | |
|-----------------------|---|
| Synonyms | JP; HMS; JPD; PLS; CPPI; DPP1; DPPI; PALS; DPP-I; PDON1 |
| Gene ID | 1075 |
| mRNA Refseq | NM_001814.6 |
| Protein Refseq | NP_001805.4 |
| MIM | 602365 |
| UniProt ID | P53634 |



Coomassie blue staining of purified CTSC protein.

 Tel: 1-631-559-9269 1-516-512-3133

 Email: info@creative-biomart.com  Fax: 1-631-938-8127

 45-1 Ramsey Road, Shirley, NY 11967, USA