

Recombinant Human CTSC Protein, Myc/DDK-tagged, C13 and N15-labeled

Cat. No. CTSC-4828H **Lot. No.** (See product label)

SPECIFICATION

Product Overview	CTSC MS Standard C13 and N15-labeled recombinant protein (NP_001805) with a C-terminal MYC/DDK tag, was expressed in HEK293 cells.
Species	Human
Source	HEK293
ProteinLength	1-463 aa
Description	<p>This gene encodes a member of the peptidase C1 family and lysosomal cysteine proteinase that appears to be a central coordinator for activation of many serine proteinases in cells of the immune system. Alternative splicing results in multiple transcript variants, at least one of which encodes a preproprotein that is proteolytically processed to generate heavy and light chains that form a disulfide-linked dimer. A portion of the propeptide acts as an intramolecular chaperone for the folding and stabilization of the mature enzyme. This enzyme requires chloride ions for activity and can degrade glucagon. Defects in the encoded protein have been shown to be a cause of Papillon-Lefevre syndrome, an autosomal recessive disorder characterized by palmoplantar keratosis and periodontitis.</p>
Molecular Mass	51.84 kDa
AA Sequence	MGAGPSLLLAALLLLLSGDGAVRCDTPANCTYLDLLGTWVFQVGSSGSQRDVNCSV MGPQEKKVVVYVYLQKLDLTAYDDLGNNSGHFTIYNQGFIVLNDYKWFVAFKFKYKEEGSK

 Tel: 1-631-559-9269 1-516-512-3133

 Email: info@creative-biomart.com  Fax: 1-631-938-8127

 45-1 Ramsey Road, Shirley, NY 11967, USA

VTTYCNETMTGWVHVDVLRNWACFTGKKVGTASENVYVNTAHLKNSQEKYSNRLY
 KYDHNFKAINAIQKSWTATTYMEYETLTLGDMIRRS GGHSRKIPRPKPAPLTAEIQQ
 KILHLPTSWDWRNVHGINFVSPVRNQASCSCYFASMGMLEARIRILTNNSTPIL
 SPQEVVSCSQYAQQCEGGFPYLIAGKYAQDFGLVEEACFPYTGTDSPCKMKEDCF
 RYYSSEYHYVGGFYGGCNEALMKLELVHHGPMVAFAFEVYDDFLHYKKGIIYHHTGLR
 DPFNPFELTNHAVLLVGYGTDSASGMDYWIVKNSWGTGWGENGYFRIRRGTDCA
 IESIAVAATPIPKLTRTRPLEQKLISEEDLAANDILDYKDDDDKV

Purity > 80% as determined by SDS-PAGE and Coomassie blue staining

Stability Stable for 3 months from receipt of products under proper storage and handling conditions.

Storage Store at -80 centigrade. Avoid repeated freeze-thaw cycles.

Concentration 50 µg/mL as determined by BCA

Storage Buffer 100 mM glycine, 25 mM Tris-HCl, pH 7.3.

GENE INFORMATION

Gene Name CTSC cathepsin C [Homo sapiens (human)]

Official Symbol CTSC

Synonyms CTSC; cathepsin C; PALS, PLS; dipeptidyl peptidase 1; DPP1; cathepsin J; dipeptidyl peptidase I; dipeptidyl transferase; dipeptidyl-peptidase I; JP; HMS; JPD; PLS; CPPI; DPPI; PALS; DPP-I;

Gene ID 1075

 Tel: 1-631-559-9269 1-516-512-3133

 Email: info@creative-biomart.com  Fax: 1-631-938-8127

 45-1 Ramsey Road, Shirley, NY 11967, USA

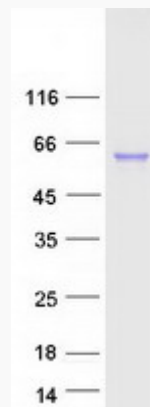
mRNA Refseq [NM_001814](#)

Protein Refseq [NP_001805](#)

MIM [602365](#)

UniProt ID [P53634](#)

SDS-PAGE



 Tel: 1-631-559-9269 1-516-512-3133

 Email: info@creative-biomart.com  Fax: 1-631-938-8127

 45-1 Ramsey Road, Shirley, NY 11967, USA