

Recombinant Human CTSD Protein (Arg23-Gln161), N-His tagged

Cat. No. CTSD-1884H Lot. No. (See product label)

SPECIFICATION

Product Overview	Recombinant human CTSD (Arg23-Gln161) fused with N-His tag was expressed in E. coli.
Species	Human
Source	E.coli
ProteinLength	Arg23-Gln161
Form	Lyophilized powder/frozen liquid
Molecular Mass	17.53 kDa
Purity	>90% as determined by SDS-PAGE
Notes	For research use only.
Storage	Use a manual defrost freezer and avoid repeated freeze thaw cycles. Store at 2 to 8 centigrade for one week. Store at -20 to -80 centigrade for twelve months from the date of receipt.
Storage Buffer	Lyophilized from PBS, pH 7.4, 0.02% NLS, 1mM EDTA, 4% trehalose, 1% mannitol.
Reconstitution	Reconstitute in sterile water for a stock solution.

 Tel: 1-631-559-9269 1-516-512-3133

 Email: info@creative-biomart.com  Fax: 1-631-938-8127

 45-1 Ramsey Road, Shirley, NY 11967, USA

Shipping They are shipped out with dry ice/blue ice unless customers require otherwise.

GENE INFORMATION

Gene Name CTSD cathepsin D [Homo sapiens (human)]

Official Symbol CTSD

Synonyms CTSD; cathepsin D; cathepsin D (lysosomal aspartyl protease), CPSD; ceroid lipofuscinosis; neuronal 10; CLN10; lysosomal aspartyl protease; lysosomal aspartyl peptidase; ceroid-lipofuscinosis, neuronal 10; CPSD; MGC2311;

Gene ID 1509

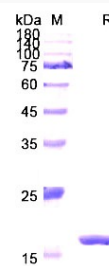
mRNA Refseq NM_001909

Protein Refseq NP_001900

MIM 116840

UniProt ID P07339

SDS-PAGE



 Tel: 1-631-559-9269 1-516-512-3133

 Email: info@creative-biomart.com  Fax: 1-631-938-8127

 45-1 Ramsey Road, Shirley, NY 11967, USA