

Recombinant *Cricetulus Griseus* CTSD Protein (65-408 aa), His-SUMO-tagged

Cat. No. CTSD-435C Lot. No. (See product label)

SPECIFICATION

Product Overview	Recombinant <i>Cricetulus Griseus</i> CTSD Protein (65-408 aa) is produced by <i>E. coli</i> expression system. This protein is fused with a 6xHis-SUMO tag at the N-terminal. Protein Description: Partial.
Species	<i>Cricetulus Griseus</i>
Source	<i>E. coli</i>
Protein Length	65-408 aa
Form	Tris-based buffer, 50% glycerol
Molecular Mass	53.3 kDa
AA Sequence	GPVSELLKKNYLDAQYYGEIGIGTPPQCFTVVFDTGSSNLWVPSIHCKLLDIACWIIHK YNSGKSSTFVKNGTSTFDIHYGSGSLSGYLSQDTVSVPCCKSEQPGGLKVEKQIFGEAI KQPGITFIAAKFDGILGMGYPSISVNNVVPVFDNLMQQKLVEKNIFSFFLNDRDPTGQP GGELMLGGIDSKYYEGELSYLNVTRKAYWQVHMDQLDVANGLTLCKGGCEAIVDTG TLLVGPVDEVKELQKAIGAVPLIQGEYMIPCEKVSSLPSVTLKLGKDYELSPSKYV LKVSQGGKTICLSGFMGMDIPPPSGPLWILGDVFIGTYTYTVFDRDNNRVGFAKAATL
Purity	> 90% as determined by SDS-PAGE.
Notes	Repeated freezing and thawing is not recommended. Store working aliquots at 4

Tel: 1-631-559-9269 1-516-512-3133

Email: info@creative-biomart.com Fax: 1-631-938-8127

45-1 Ramsey Road, Shirley, NY 11967, USA

centigrade for up to one week.

Storage

The shelf life is related to many factors, storage state, buffer ingredients, storage temperature and the stability of the protein itself. Generally, the shelf life of liquid form is 6 months at -20 centigrade/-80 centigrade. The shelf life of lyophilized form is 12 months at -20 centigrade/-80 centigrade.

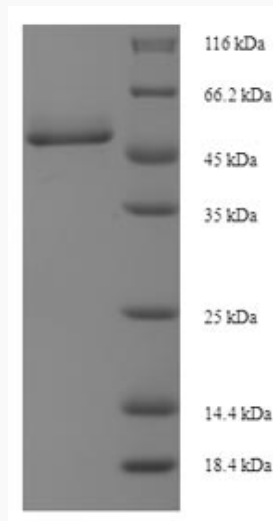
Concentration

A hardcopy of COA with concentration instruction is sent along with the products.

GENE INFORMATION

Official Symbol CTSD

UniProt ID G3I4W7



(Tris-Glycine gel) Discontinuous SDS-PAGE (reduced) with 5% enrichment gel and 15% separation gel.

 Tel: 1-631-559-9269 1-516-512-3133

 Email: info@creative-biomart.com  Fax: 1-631-938-8127

 45-1 Ramsey Road, Shirley, NY 11967, USA