

Recombinant Human CTSD protein, His-tagged

Cat. No. CTSD-4669H Lot. No. (See product label)

SPECIFICATION

Product Overview	Recombinant Human CTSD protein(P07339)(21-412 aa), fused with C-terminal His tag, was expressed in Yeast.
Species	Human
Source	Yeast
ProteinLength	21-412 aa
Form	For liquid formulations, the standard storage buffer consists of a Tris or PBS based solution supplemented with 5-50% glycerol. When provided as lyophilized powder, the product undergoes freeze-drying from a Tris- or PBS-based formulation containing 6% trehalose, adjusted to pH 8.0 prior to the lyophilization process.
Molecular Mass	44.6 kDa
AASequence	LVRIPLHKFTSIRRTMSEVGGSVEDLIAKGPVSKYSQAVPAVTEGPIPEVLKNYMDAQ YYGEIGIGTPPQCFTVVFDTGSSNLWVPSIHCKLLDIACWIHHKYNSDKSSTYVKNGT SFDIHYGSGSLSGYLSQDTVSVPCQSASSASALGGVKVERQVFGEATKQPGITFIAA KFDGILGMAYPRISVNNVLPVFDNLMQQKLVDQNIFSFYLSRDPDAQPGGELMLGGT DSKYYYKGSLSYLVNTRKAYWQVHLDQVEVASGLTLCKEGCEAIVDTGTSLMVGPPVD EVRELQKAIGAVPLIQGEYMIPCEKVSTLPAITLKLGGKGYKLSPEDYTLKVSQAGKT LCLSGFMGMDIPPPSGPLWILGDVFIGRYYTVFDRDNNRVGF AEAARL
Purity	Greater than 95% as determined by SDS-PAGE.

 Tel: 1-631-559-9269 1-516-512-3133

 Email: info@creative-biomart.com  Fax: 1-631-938-8127

 45-1 Ramsey Road, Shirley, NY 11967, USA

Storage Store at -20°C/-80°C upon receipt, aliquoting is necessary for mutiple use. Avoid repeated freeze-thaw cycles.

Reconstitution Please reconstitute protein indeionized sterile water to a concentration of 0.1-1.0 mg/mL. Aliquot for long-term storage at -80°C.

GENE INFORMATION

Gene Name CTSD cathepsin D [Homo sapiens]

Official Symbol CTSD

Synonyms CTSD; cathepsin D; cathepsin D (lysosomal aspartyl protease) , CPSD; ceroid lipofuscinosis; neuronal 10; CLN10; lysosomal aspartyl protease; lysosomal aspartyl peptidase; ceroid-lipofuscinosis, neuronal 10; CPSD; MGC2311;

Gene ID 1509

mRNA Refseq NM_001909

Protein Refseq NP_001900

MIM 116840

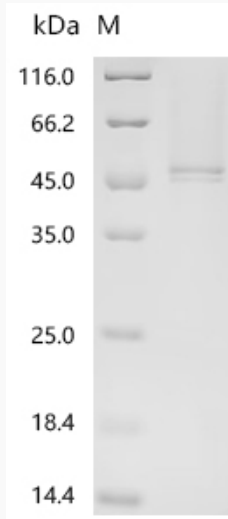
UniProt ID P07339

 Tel: 1-631-559-9269 1-516-512-3133

 Email: info@creative-biomart.com  Fax: 1-631-938-8127

 45-1 Ramsey Road, Shirley, NY 11967, USA

SDS-PAGE



 Tel: 1-631-559-9269 1-516-512-3133

 Email: info@creative-biomart.com  Fax: 1-631-938-8127

 45-1 Ramsey Road, Shirley, NY 11967, USA