

Recombinant Human CTSD Protein, His-tagged

Cat. No. CTSD-877H Lot. No. (See product label)

SPECIFICATION

| | |
|-------------------------|---------------------------------------------------------------------------------------------------------------------------------------------------------------------------------------------------------------------------------------------------------------------------------------------------------------------------------------------------------------------------------------------------------------------------------------------------------------------------------------------------------------------------------------------------------------------------------------------------------------------------------------------|
| Product Overview | Recombinant Human CTSD Protein (Leu21-Leu412) with His tag was expressed in 293F. |
| Species | Human |
| Source | HEK293 |
| ProteinLength | Leu21-Leu412 |
| Description | <p>This gene encodes a member of the A1 family of peptidases. The encoded preproprotein is proteolytically processed to generate multiple protein products. These products include the cathepsin D light and heavy chains, which heterodimerize to form the mature enzyme. This enzyme exhibits pepsin-like activity and plays a role in protein turnover and in the proteolytic activation of hormones and growth factors. Mutations in this gene play a causal role in neuronal ceroid lipofuscinosis-10 and may be involved in the pathogenesis of several other diseases, including breast cancer and possibly Alzheimer's disease.</p> |
| Form | Freeze-dried powder |
| Molecular Mass | Predicted Molecular Mass: 44.2 kDa; Accurate Molecular Mass: 50 kDa |
| Purity | > 97% |
| Applications | Cell culture; Activity Assays. |

 Tel: 1-631-559-9269 1-516-512-3133

 Email: info@creative-biomart.com  Fax: 1-631-938-8127

 45-1 Ramsey Road, Shirley, NY 11967, USA

| | |
|-----------------------|----------------------------------------------------------------------------------------------------------------------------------------------------------------------------------------------------------------------------------------------------------------------------------------------------------------------------------------------|
| Stability | The thermal stability is described by the loss rate. The loss rate was determined by accelerated thermal degradation test, that is, incubate the protein at 37 centigrade for 48h, and no obvious degradation and precipitation were observed. The loss rate is less than 5% within the expiration date under appropriate storage condition. |
| Storage | Avoid repeated freeze/thaw cycles. Store at 2-8 centigrade for one month. Aliquot and store at -80 centigrade for 12 months. |
| Storage Buffer | PBS, pH7.4, containing 0.01% SKL, 1mM DTT, 5% Trehalose and Proclin300. |
| Reconstitution | Reconstitute in 20mM Tris, 150mM NaCl (PH8.0) to a concentration of 0.1-1.0 mg/mL. Do not vortex. |

GENE INFORMATION

| | |
|------------------------|------------------------------------------------------------------------------------------------------------------------------------------------------------------------------------------------------------------------------|
| Gene Name | CTSD cathepsin D [Homo sapiens (human)] |
| Official Symbol | CTSD |
| Synonyms | CTSD; cathepsin D; cathepsin D (lysosomal aspartyl protease), CPSD; ceroid lipofuscinosis; neuronal 10; CLN10; lysosomal aspartyl protease; lysosomal aspartyl peptidase; ceroid-lipofuscinosis, neuronal 10; CPSD; MGC2311; |
| Gene ID | 1509 |
| mRNA Refseq | NM_001909 |
| Protein Refseq | NP_001900 |
| MIM | 116840 |

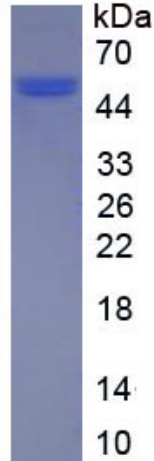
 Tel: 1-631-559-9269 1-516-512-3133

 Email: info@creative-biomart.com  Fax: 1-631-938-8127

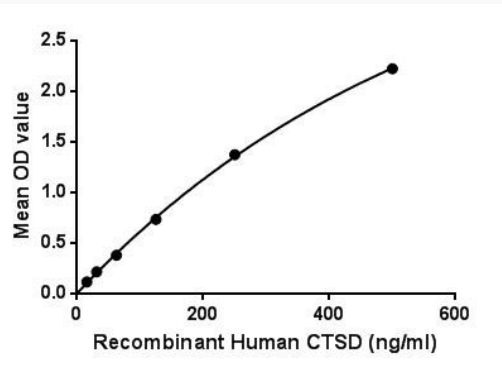
 45-1 Ramsey Road, Shirley, NY 11967, USA

UniProt ID

P07339



Binding activity



 Tel: 1-631-559-9269 1-516-512-3133

 Email: info@creative-biomart.com  Fax: 1-631-938-8127

 45-1 Ramsey Road, Shirley, NY 11967, USA