

Recombinant Human Cathepsin D

Cat. No. CTSD-90H **Lot. No.** (See product label)

SPECIFICATION

Product Overview	Recombinant full length human Cathepsin D protein expressed in <i>E.coli</i> , 48kDa.
Species	Human
Source	<i>E.coli</i>
Description	Cathepsin D is synthesized as a 54kDa precursor, which is proteolytically processed to an intermediate 48kDa single chain, which matures into more stable 34kDa and 14kDa two chain form. It is an estrogen-regulated lysosomal protease that has been suggested to facilitate cancer cell migration and invasion by digesting the basement membrane, extracellular matrix, and connective tissue. Because of its mitogenic and proteolytic activities, it has been implicated as a prognostic marker in many tumor types. Cathepsin D is expressed in epithelial cells as well as in macrophages.
Presentation	5g/50μl purified human Cathepsin D protein at 0.1mg/ml in 50mM Tris-Acetate, pH7.5, 1mM EDTA and 20% Glycerol.
Applications	•ELISA •Inhibition Assays •Western Blotting
Characterization	On SDS-PAGE commassie blue stained gel, the purified recombinant protein shows a band at 48kDa.
Activity	Not known.
Storage	Store vial at -20°C to -80°C. When stored at the recommended temperature, this

 Tel: 1-631-559-9269 1-516-512-3133

 Email: info@creative-biomart.com  Fax: 1-631-938-8127

 45-1 Ramsey Road, Shirley, NY 11967, USA

protein is stable for 12 months.

Full Length Full L.

GENE INFORMATION

Gene Name [CTSD cathepsin D \[Homo sapiens \]](#)

Synonyms CTSD; cathepsin D; CPSD; CLN10; MGC2311; lysosomal aspartyl protease; lysosomal aspartyl peptidase; ceroid-lipofuscinosis, neuronal 10; EC 3.4.23.5; cathepsin D (lysosomal aspartyl protease); Cathepsin D light chain; Cathepsin D heavy chain

Gene ID [1509](#)

mRNA Refseq [NM_001909](#)

Protein Refseq [NP_001900](#)

MIM [116840](#)

UniProt ID [P07339](#)

Chromosome Location 11p15.5

Pathway Lysosome

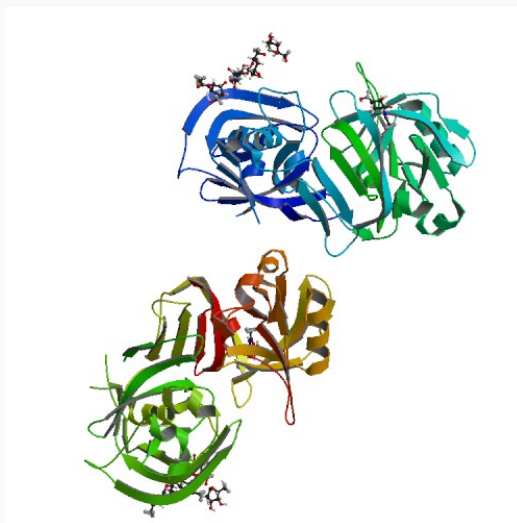
Function aspartic-type endopeptidase activity; peptidase activity

 Tel: 1-631-559-9269 1-516-512-3133

 Email: info@creative-biomart.com  Fax: 1-631-938-8127

 45-1 Ramsey Road, Shirley, NY 11967, USA

PDB rendering based
on 1lya.



 Tel: 1-631-559-9269 1-516-512-3133

 Email: info@creative-biomart.com  Fax: 1-631-938-8127

 45-1 Ramsey Road, Shirley, NY 11967, USA