

Recombinant Human CTSE Protein, His&GST-tagged

Cat. No. CTSE-1291H Lot. No. (See product label)

SPECIFICATION

Product Overview	Recombinant Human CTSE Protein (Ser20-Pro349) with N-His&GST tag was expressed in E. coli.
Species	Human
Source	E.coli
ProteinLength	Ser20-Pro349
Description	This gene encodes a member of the A1 family of peptidases. Alternative splicing of this gene results in multiple transcript variants. At least one of these variants encodes a preproprotein that is proteolytically processed to generate the mature enzyme. This enzyme, an aspartic endopeptidase, may be involved in antigen processing and the maturation of secretory proteins. Elevated expression of this gene has been observed in neurodegeneration.
Form	Freeze-dried powder
Molecular Mass	Predicted Molecular Mass: 67.3 kDa Accurate Molecular Mass: 71 kDa
Purity	> 90%
Applications	Positive Control; Immunogen; SDS-PAGE; WB.

 Tel: 1-631-559-9269 1-516-512-3133

 Email: info@creative-biomart.com  Fax: 1-631-938-8127

 45-1 Ramsey Road, Shirley, NY 11967, USA

Stability	The thermal stability is described by the loss rate. The loss rate was determined by accelerated thermal degradation test, that is, incubate the protein at 37 centigrade for 48h, and no obvious degradation and precipitation were observed. The loss rate is less than 5% within the expiration date under appropriate storage condition.
Storage	Avoid repeated freeze/thaw cycles. Store at 2-8 centigrade for one month. Aliquot and store at -80 centigrade for 12 months.
Storage Buffer	20mM Tris, 150mM NaCl, pH8.0, containing 1mM EDTA, 1mM DTT, 0.01% SKL, 5% Trehalose and Proclin300.
Reconstitution	Reconstitute in 20mM Tris, 150mM NaCl (pH8.0) to a concentration of 0.1-1.0 mg/mL. Do not vortex.

GENE INFORMATION

Gene Name	CTSE cathepsin E [Homo sapiens (human)]
Official Symbol	CTSE
Synonyms	CTSE; cathepsin E; slow-moving proteinase; erythrocyte membrane aspartic proteinase; CATE;
Gene ID	1510
mRNA Refseq	NM_001910
Protein Refseq	NP_001901
MIM	116890

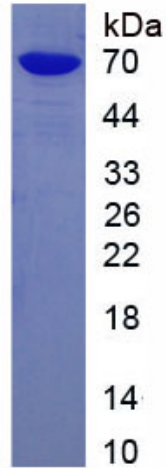
 Tel: 1-631-559-9269 1-516-512-3133

 Email: info@creative-biomart.com  Fax: 1-631-938-8127

 45-1 Ramsey Road, Shirley, NY 11967, USA

UniProt ID

P14091



 Tel: 1-631-559-9269 1-516-512-3133

 Email: info@creative-biomart.com  Fax: 1-631-938-8127

 45-1 Ramsey Road, Shirley, NY 11967, USA