

Recombinant Human CTSG protein, His & GST-tagged

Cat. No. CTSG-1104H Lot. No. (See product label)

SPECIFICATION

Product Overview	Recombinant Human CTSG aa. (Ile21~Leu255 (Accession # P08311) fused with N-terminal His & GST tag was produced in E. coli cells.
Species	Human
Source	E.coli
ProteinLength	Ile21~Leu255
Description	The protein encoded by this gene, a member of the peptidase S1 protein family, is found in azurophil granules of neutrophilic polymorphonuclear leukocytes. The encoded protease has a specificity similar to that of chymotrypsin C, and may participate in the killing and digestion of engulfed pathogens, and in connective tissue remodeling at sites of inflammation. In addition, the encoded protein is antimicrobial, with bacteriocidal activity against <i>S. aureus</i> and <i>N. gonorrhoeae</i> . Transcript variants utilizing alternative polyadenylation signals exist for this gene.
Form	Freeze-dried powder
Molecular Mass	Predicted Molecular Mass: 56.8kDa.
Endotoxin	<1.0EU per 1g (determined by the LAL method)
Purity	>90%

 Tel: 1-631-559-9269 1-516-512-3133

 Email: info@creative-biomart.com  Fax: 1-631-938-8127

 45-1 Ramsey Road, Shirley, NY 11967, USA

Characteristic	The isoelectric point is 11.4.
Applications	SDS-PAGE; WB; ELISA; IP.
Stability	The thermal stability is described by the loss rate of the target protein. The loss rate was determined by accelerated thermal degradation test, that is, incubate the protein at 37°C for 48h, and no obvious degradation and precipitation were observed. (Referring from China Biological Products Standard, which was calculated by the Arrhenius equation.) The loss of this protein is less than 5% within the expiration date under appropriate storage condition.
Storage	Avoid repeated freeze/thaw cycles. Store at 2-8°C for one month. Aliquot and store at -80°C for 12 months.
Storage buffer	Supplied as lyophilized form in 20mM Tris, 150mM NaCl, pH8.0, containing 1mM EDTA, 1mM DTT, 0.01% sarcosyl, 5% trehalose, and preservative.
Reconstitution	Reconstitute in sterile ddH ₂ O.

GENE INFORMATION

Gene Name	CTSG cathepsin G [Homo sapiens (human)]
Official Symbol	CTSG
Synonyms	CTSG; cathepsin G; CG; CATG
Gene ID	1511
mRNA Refseq	NM_001911.2

 Tel: 1-631-559-9269 1-516-512-3133

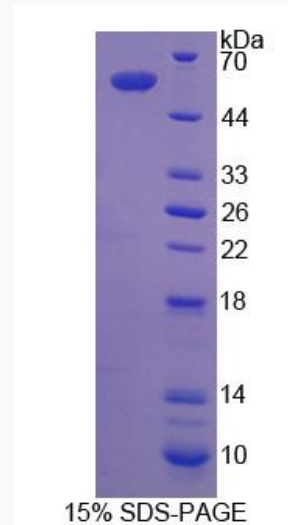
 Email: info@creative-biomart.com  Fax: 1-631-938-8127

 45-1 Ramsey Road, Shirley, NY 11967, USA

Protein Refseq NP_001902.1

UniProt ID P08311

SDS-PAGE



 Tel: 1-631-559-9269 1-516-512-3133

 Email: info@creative-biomart.com  Fax: 1-631-938-8127

 45-1 Ramsey Road, Shirley, NY 11967, USA