

Recombinant Human CTSG Protein, GST-tagged

Cat. No. CTSG-2106H **Lot. No.** (See product label)

SPECIFICATION

Product Overview	Human CTSG full-length ORF (AAH14460.1, 1 a.a. - 255 a.a.) recombinant protein with GST-tag at N-terminal.
Species	Human
Source	Wheat Germ
Description	The protein encoded by this gene, a member of the peptidase S1 protein family, is found in azurophil granules of neutrophilic polymorphonuclear leukocytes. The encoded protease has a specificity similar to that of chymotrypsin C, and may participate in the killing and digestion of engulfed pathogens, and in connective tissue remodeling at sites of inflammation. In addition, the encoded protein is antimicrobial, with bacteriocidal activity against <i>S. aureus</i> and <i>N. gonorrhoeae</i> . Transcript variants utilizing alternative polyadenylation signals exist for this gene. [provided by RefSeq, Sep 2014]
Molecular Mass	53.79 kDa
AA Sequence	MQPLLLLLAFLLPTGAEAGEIIGGRESRPHSRPYMAYLQIQSPAGQSRCGGFLVRED FVLTAAHCWGSNINVTLGAHNIQRRENTQQHITARRAIRHPQYNQRTIQNDIMLLQLS RRVRRNRNVNPVALPRAQEGLRPGLTCTVAGWGRVSMRRGDTLREVQLRVQRD RQCLRIFGSYDPRRQICVGDRRERKAAFKGDSGGPLLCNNVAHGIVSYGKSSGVPP EVFTRVSSFLPWIRTTMRSFKLLDQMETPL
Applications	Enzyme-linked Immunoabsorbent Assay

 Tel: 1-631-559-9269 1-516-512-3133

 Email: info@creative-biomart.com  Fax: 1-631-938-8127

 45-1 Ramsey Road, Shirley, NY 11967, USA

Western Blot (Recombinant protein)
 Antibody Production
 Protein Array

Notes	Best use within three months from the date of receipt of this protein.
Storage	Store at -80 centigrade. Aliquot to avoid repeated freezing and thawing.
Storage Buffer	50 mM Tris-HCl, 10 mM reduced Glutathione, pH=8.0 in the elution buffer.

GENE INFORMATION

Gene Name	CTSG cathepsin G [Homo sapiens]
Official Symbol	CTSG
Synonyms	CTSG; cathepsin G; CG; CATG; MGC23078;
Gene ID	1511
mRNA Refseq	NM_001911
Protein Refseq	NP_001902
MIM	116830
UniProt ID	P08311

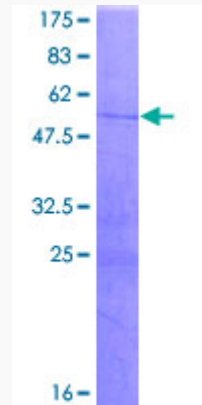
 Tel: 1-631-559-9269 1-516-512-3133

 Email: info@creative-biomart.com  Fax: 1-631-938-8127

 45-1 Ramsey Road, Shirley, NY 11967, USA

Quality Control

Testing:



12.5% SDS-PAGE Stained with Coomassie Blue.

 Tel: 1-631-559-9269 1-516-512-3133

 Email: info@creative-biomart.com  Fax: 1-631-938-8127

 45-1 Ramsey Road, Shirley, NY 11967, USA