

# Recombinant Human CTSH Protein, Myc/DDK-tagged, C13 and N15-labeled

**Cat. No.** CTSH-1619H    **Lot. No.** (See product label)

## SPECIFICATION

<b>Product Overview</b>	CTSH MS Standard C13 and N15-labeled recombinant protein (NP_004381) with a C-terminal MYC/DDK tag, was expressed in HEK293 cells.
<b>Species</b>	Human
<b>Source</b>	HEK293
<b>Description</b>	The protein encoded by this gene is a lysosomal cysteine proteinase important in the overall degradation of lysosomal proteins. It is composed of a dimer of disulfide-linked heavy and light chains, both produced from a single protein precursor. The encoded protein, which belongs to the peptidase C1 protein family, can act both as an aminopeptidase and as an endopeptidase. Increased expression of this gene has been correlated with malignant progression of prostate tumors. Alternate splicing of this gene results in multiple transcript variants encoding different isoforms.
<b>Molecular Mass</b>	37.4 kDa
<b>AA Sequence</b>	MWATLPLLCAGAWLLGVPVCGAAELSVNSLEKFHFKSWMSKHRKTYSTEEYHHRL QTFASNWRKINAHNNGNHTFKMALNQFSDMSFAEIKHKYLWSEPQNCSATKSNYLR GTGPYPSPVDWRKKGNFVSPVKNQGACGSCWTFSTTGALESIAIATGKMLSLAEQ QLVDCAQDFNNHGCQGGLPSQAFEYILYNKGIMGEDTYPYQGKGDGYCKFQPGKAI GFVKDVANITIYDEEAMVEAVALYNPVSFAFEVTQDFMMYRTGIYSSTSCHKTPDKV NHAVLAVGYGEKNGIPYWIVKNSWGPQWGMNGYFLIERGKNMCGLAACASYPIPLV

 Tel: 1-631-559-9269    1-516-512-3133

 Email: [info@creative-biomart.com](mailto:info@creative-biomart.com)     Fax: 1-631-938-8127

 45-1 Ramsey Road, Shirley, NY 11967, USA



TRTRPLEQKLISEEDLAANDILDYKDDDDKV

**Purity** > 80% as determined by SDS-PAGE and Coomassie blue staining

**Stability** Stable for 3 months from receipt of products under proper storage and handling conditions.

**Storage** Store at -80 centigrade. Avoid repeated freeze-thaw cycles.

**Concentration** 50 µg/mL as determined by BCA

**Storage Buffer** 100 mM glycine, 25 mM Tris-HCl, pH 7.3.

## GENE INFORMATION

**Gene Name** CTSH cathepsin H [ Homo sapiens (human) ]

**Official Symbol** CTSH

**Synonyms** CTSH; cathepsin H; CPSB; pro-cathepsin H; ACC 4; ACC 5; aleurain; cathepsin B3; cathepsin BA; N-benzoylarginine-beta-naphthylamide hydrolase; ACC-4; ACC-5; minichain; MGC1519; DKFZp686B24257;

**Gene ID** 1512

**mRNA Refseq** NM\_004390

**Protein Refseq** NP\_004381

**MIM** 116820

Tel: 1-631-559-9269 1-516-512-3133

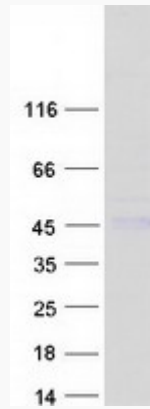
Email: [info@creative-biomart.com](mailto:info@creative-biomart.com) Fax: 1-631-938-8127

45-1 Ramsey Road, Shirley, NY 11967, USA

UniProt ID

P09668

SDS-PAGE



 Tel: 1-631-559-9269 1-516-512-3133

 Email: [info@creative-biomart.com](mailto:info@creative-biomart.com)  Fax: 1-631-938-8127

 45-1 Ramsey Road, Shirley, NY 11967, USA