

Recombinant Human Cathepsin H

Cat. No. CTSH-1650H **Lot. No.** (See product label)

SPECIFICATION

Product Overview	Recombinant human CTSH was expressed by Human liver.
Species	Human
Source	Human liver
Description	A more basic protein than Cathepsin B or L. Functions as both an aminopeptidase and endopeptidase. CTSH, like cathepsin L and B, is involved in the catabolism of proteins in the lysosomal system.
Biological Activity	1.96 units/mg protein. One unit is defined as the amount of enzyme that hydrolyzes one μmol Arg-AFC substrate per minute at 37°C, pH 6.8, with 750 mM potassium phosphate, 1 mM EDTA and 3 mM cysteine.
Form	Frozen liquid (15 μl) in 50 mM sodium acetate, pH 5.5, with 1 mM EDTA and 100 mM NaCl.
Appearance	Liquid
Purity	$\geq 95\%$ by SDS-PAGE
Storage	Store at -80°C, stable for at least 1 year as supplied. Avoid freeze/thaw cycles.
Pathways	Lysosome

 Tel: 1-631-559-9269 1-516-512-3133

 Email: info@creative-biomart.com  Fax: 1-631-938-8127

 45-1 Ramsey Road, Shirley, NY 11967, USA

GENE INFORMATION

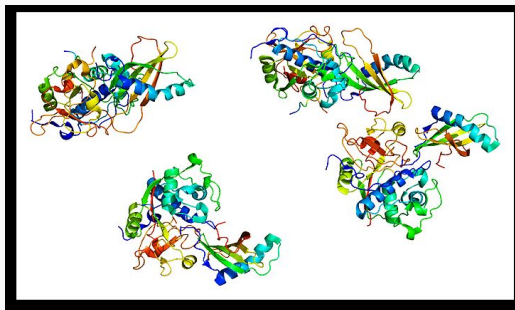
Gene Name	CTSH cathepsin H [Homo sapiens]
Official Symbol	CTSH
Synonyms	CTSH; cathepsin H; CPSB; ACC-4; ACC-5; MGC1519; minichain; DKFZp686B24257; CTSH; aleurain; cathepsin B3; cathepsin BA; OTTHUMP00000185564; N-benzoylarginine-beta-naphthylamide hydrolase; minichain; EC 3.4.22.16
Gene ID	1512
mRNA Refseq	NM_004390
Protein Refseq	NP_004381
MIM	116820
UniProt ID	P09668
Chromosome Location	15q25.1
Function	cysteine-type endopeptidase activity; ysteine-type peptidase activity; kininogen binding; peptidase activity; protein binding

 Tel: 1-631-559-9269 1-516-512-3133

 Email: info@creative-biomart.com  Fax: 1-631-938-8127

 45-1 Ramsey Road, Shirley, NY 11967, USA

PDB rendering based
on 1nb3.



 Tel: 1-631-559-9269 1-516-512-3133

 Email: info@creative-biomart.com  Fax: 1-631-938-8127

 45-1 Ramsey Road, Shirley, NY 11967, USA