

## Recombinant Human CTSH Protein (Ala23-Val335), C-His tagged

Cat. No. CTSH-1887H Lot. No. (See product label)

### SPECIFICATION

<b>Product Overview</b>	Recombinant human CTSH (Ala23-Val335) fused with C-terminal His tag was expressed in Mammalian cells.
<b>Species</b>	Human
<b>Source</b>	Mammalian Cells
<b>ProteinLength</b>	Ala23-Val335
<b>Form</b>	Lyophilized powder/frozen liquid
<b>Molecular Mass</b>	34.43 kDa
<b>Purity</b>	>90% as determined by SDS-PAGE
<b>Notes</b>	For research use only.
<b>Storage</b>	Use a manual defrost freezer and avoid repeated freeze thaw cycles. Store at 2 to 8 centigrade for one week. Store at -20 to -80 centigrade for twelve months from the date of receipt.
<b>Storage Buffer</b>	Supplied as solution form in PBS or lyophilized from PBS.
<b>Reconstitution</b>	Reconstitute in sterile water for a stock solution.

 Tel: 1-631-559-9269 1-516-512-3133

 Email: [info@creative-biomart.com](mailto:info@creative-biomart.com)  Fax: 1-631-938-8127

 45-1 Ramsey Road, Shirley, NY 11967, USA

**Shipping** They are shipped out with dry ice/blue ice unless customers require otherwise.

## GENE INFORMATION

**Gene Name** CTSH cathepsin H [ Homo sapiens (human) ]

**Official Symbol** CTSH

**Synonyms** CTSH; cathepsin H; CPSB; pro-cathepsin H; ACC 4; ACC 5; aleurain; cathepsin B3; cathepsin BA; N-benzoylarginine-beta-naphthylamide hydrolase; ACC-4; ACC-5; minichain; MGC1519; DKFZp686B24257;

**Gene ID** 1512

**mRNA Refseq** NM\_004390

**Protein Refseq** NP\_004381

**MIM** 116820

**UniProt ID** P09668

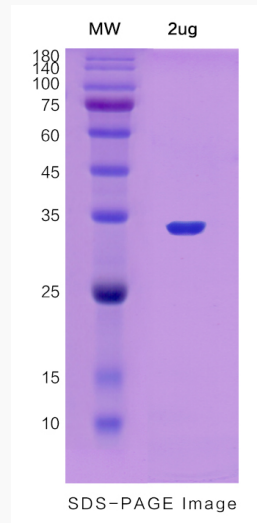
 Tel: 1-631-559-9269 1-516-512-3133

 Email: [info@creative-biomart.com](mailto:info@creative-biomart.com)  Fax: 1-631-938-8127

 45-1 Ramsey Road, Shirley, NY 11967, USA



**SDS-PAGE**



Tel: 1-631-559-9269 1-516-512-3133

Email: [info@creative-biomart.com](mailto:info@creative-biomart.com) Fax: 1-631-938-8127

45-1 Ramsey Road, Shirley, NY 11967, USA