

Recombinant Human CTSH Protein (Ala23-Val335), N-His tagged

Cat. No. CTSH-1889H Lot. No. (See product label)

SPECIFICATION

Product Overview	Recombinant human CTSH (Ala23-Val335) fused with N-His tag was expressed in E. coli.
Species	Human
Source	E.coli
ProteinLength	Ala23-Val335
Form	Lyophilized powder/frozen liquid
Molecular Mass	37.48 kDa
Purity	>90% as determined by SDS-PAGE
Notes	For research use only.
Storage	Use a manual defrost freezer and avoid repeated freeze thaw cycles. Store at 2 to 8 centigrade for one week. Store at -20 to -80 centigrade for twelve months from the date of receipt.
Storage Buffer	0.01M PBS, pH 7.4, 0.02% NLS
Reconstitution	Reconstitute in sterile water for a stock solution.

 Tel: 1-631-559-9269 1-516-512-3133

 Email: info@creative-biomart.com  Fax: 1-631-938-8127

 45-1 Ramsey Road, Shirley, NY 11967, USA

Shipping They are shipped out with dry ice/blue ice unless customers require otherwise.

GENE INFORMATION

Gene Name CTSH cathepsin H [Homo sapiens (human)]

Official Symbol CTSH

Synonyms CTSH; cathepsin H; CPSB; pro-cathepsin H; ACC 4; ACC 5; aleurain; cathepsin B3; cathepsin BA; N-benzoylarginine-beta-naphthylamide hydrolase; ACC-4; ACC-5; minichain; MGC1519; DKFZp686B24257;

Gene ID 1512

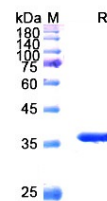
mRNA Refseq NM_004390

Protein Refseq NP_004381

MIM 116820

UniProt ID P09668

SDS-PAGE



 Tel: 1-631-559-9269 1-516-512-3133

 Email: info@creative-biomart.com  Fax: 1-631-938-8127

 45-1 Ramsey Road, Shirley, NY 11967, USA