

## Recombinant Human CTSH Protein, GST-tagged

Cat. No. CTSH-2108H Lot. No. (See product label)

### SPECIFICATION

<b>Product Overview</b>	Human CTSH full-length ORF ( NP_004381.2, 1 a.a. - 335 a.a.) recombinant protein with GST-tag at N-terminal.
<b>Species</b>	Human
<b>Source</b>	Wheat Germ
<b>Description</b>	The protein encoded by this gene is a lysosomal cysteine proteinase important in the overall degradation of lysosomal proteins. It is composed of a dimer of disulfide-linked heavy and light chains, both produced from a single protein precursor. The encoded protein, which belongs to the peptidase C1 protein family, can act both as an aminopeptidase and as an endopeptidase. Increased expression of this gene has been correlated with malignant progression of prostate tumors. Alternate splicing of this gene results in multiple transcript variants encoding different isoforms. [provided by RefSeq, Jan 2016]
<b>Molecular Mass</b>	63.8 kDa
<b>AA Sequence</b>	MWATLPLLCAWLLGVPVCGAAELCVNSLEKFHFKSWMSKHRKTYSTEEYHHRL QTFASNWRKINAHNNGNHTFKMALNQFSDMSFAEIKHKYLWSEPQNCSATKSNYLR GTGPYPSPVDWRKKGNFVSPVKNQGACGSCWTFSTTGALESIAIATGKMLSLAEQ QLVDCAQDFNNHGCQGGLPSQAFEYILYNKGIMGEDTYPYQGKDG YCKFQPGKAI GFVKDVANITIYDEEAMVEAVALYNPVSF AFEVTQDFM MYRTGIYSSTSCHKTPDKV NHAVLAVGYGEKNGIPYWIVKNSWGPQWGMNGYFLIERGKNMCGLAACASYPIPLV

 Tel: 1-631-559-9269 1-516-512-3133

 Email: [info@creative-biomart.com](mailto:info@creative-biomart.com)  Fax: 1-631-938-8127

 45-1 Ramsey Road, Shirley, NY 11967, USA

<b>Applications</b>	Enzyme-linked Immunoabsorbent Assay Western Blot (Recombinant protein) Antibody Production Protein Array
<b>Notes</b>	Best use within three months from the date of receipt of this protein.
<b>Storage</b>	Store at -80 centigrade. Aliquot to avoid repeated freezing and thawing.
<b>Storage Buffer</b>	50 mM Tris-HCl, 10 mM reduced Glutathione, pH=8.0 in the elution buffer.

## GENE INFORMATION

<b>Gene Name</b>	CTSH cathepsin H [ Homo sapiens ]
<b>Official Symbol</b>	CTSH
<b>Synonyms</b>	CTSH; cathepsin H; CPSB; pro-cathepsin H; ACC 4; ACC 5; aleurain; cathepsin B3; cathepsin BA; N-benzoylarginine-beta-naphthylamide hydrolase; ACC-4; ACC-5; minichain; MGC1519; DKFZp686B24257;
<b>Gene ID</b>	1512
<b>mRNA Refseq</b>	NM_004390
<b>Protein Refseq</b>	NP_004381
<b>MIM</b>	116820
<b>UniProt ID</b>	P09668

 Tel: 1-631-559-9269 1-516-512-3133

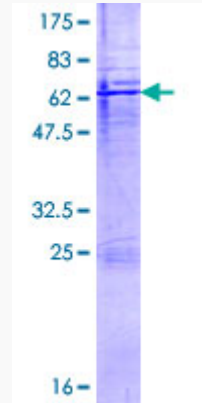
 Email: [info@creative-biomart.com](mailto:info@creative-biomart.com)  Fax: 1-631-938-8127

 45-1 Ramsey Road, Shirley, NY 11967, USA



**Quality Control**

**Testing:**



12.5% SDS-PAGE Stained with Coomassie Blue.

Tel: 1-631-559-9269 1-516-512-3133

Email: [info@creative-biomart.com](mailto:info@creative-biomart.com) Fax: 1-631-938-8127

45-1 Ramsey Road, Shirley, NY 11967, USA