

Recombinant Human Cathepsin H, T7-tagged

Cat. No. CTSH-3042H Lot. No. (See product label)

SPECIFICATION

Product Overview	Recombinant Human CTSH was produced in <i>E.coli</i> with a T7 tag at N-terminus. MW = 37378 Da (23-335 aa).
Species	Human
Source	E.coli
Protein Length	23-335 a.a.
Description	The protein encoded by this gene is a lysosomal cysteine proteinase important in the overall degradation of lysosomal proteins. It is composed of a dimer of disulfide-linked heavy and light chains, both produced from a single protein precursor. The encoded protein, which belongs to the peptidase C1 protein family, can act both as an aminopeptidase and as an endopeptidase. Increased expression of this gene has been correlated with malignant progression of prostate tumors. Two transcript variants encoding different isoforms have been found for this gene.
Form	10 mM Tris. pH 8.0. 0.1% Triton X-100. 0.002% NaN ₃ .
Purity	95%.
Applications	MS. SDS.

GENE INFORMATION

 Tel: 1-631-559-9269 1-516-512-3133

 Email: info@creative-biomart.com  Fax: 1-631-938-8127

 45-1 Ramsey Road, Shirley, NY 11967, USA

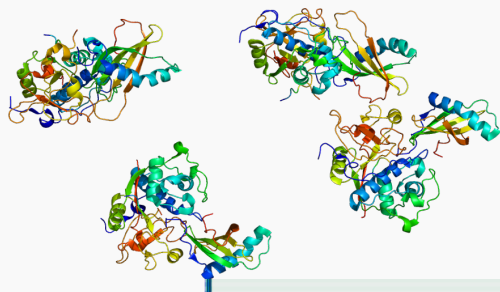
Gene Name	CTSH cathepsin H [Homo sapiens]
Synonyms	CTSH; cathepsin H; CPSB; ACC-4; ACC-5; MGC1519; minichain; DKFZp686B24257; cathepsin H; aleurain; cathepsin B3; cathepsin BA; N-benzoylarginine-beta-naphthylamide hydrolase; EC 3.4.22.16; Cathepsin H mini chain; Cathepsin H heavy chain; Cathepsin H light chain
Gene ID	1512
mRNA Refseq	NM_004390
Protein Refseq	NP_004381
MIM	116820
UniProt ID	P09668
Chromosome Location	15q25.1
Pathway	Lysosome
Function	cysteine-type endopeptidase activity; cysteine-type peptidase activity; kininogen binding; peptidase activity; protein binding; protein complex binding

 Tel: 1-631-559-9269 1-516-512-3133

 Email: info@creative-biomart.com  Fax: 1-631-938-8127


 45-1 Ramsey Road, Shirley, NY 11967, USA

PDB rendering based
on 1nb3.



 Tel: 1-631-559-9269 1-516-512-3133

 Email: info@creative-biomart.com  Fax: 1-631-938-8127

 45-1 Ramsey Road, Shirley, NY 11967, USA