

Native Human Eosinophil Peroxidase

Cat. No. CTSH-360H **Lot. No.** (See product label)

SPECIFICATION

Product Overview	Native Human CTSH was expressed in Human Liver.
Species	Human
Source	Human Liver
Description	A morebasic protein than Cathepsin B or L. Functions as both an aminopeptidase and endopeptidase.CTSH, like cathepsin L and B, is involved in the catabolism of proteins inthe lysosomal system.
Form	Frozenliquid in a buffer of 0.02 M Sodium Acetate + 0.1 M NaCl + 1 mM EDTA, pH 4.5.
Molecular Weight	28 kDa
Purity	> 95% by SDS-PAGE
Specific Activity	≥ 1 unitper mg protein. One unit is defined as the amount of enzyme that hydrolyzes oneμmole of L-arginine-beta-naphthylamide per minute at 40°C using 75 mMpotassium phosphate, pH 6.8, with 1 mM EDTA and 3 mM cysteine as theactivation buffer.
Concentration	1.0 mg/ml
Storage	Product is stable at -80°Cfor 3 years.

 Tel: 1-631-559-9269 1-516-512-3133

 Email: info@creative-biomart.com  Fax: 1-631-938-8127

 45-1 Ramsey Road, Shirley, NY 11967, USA

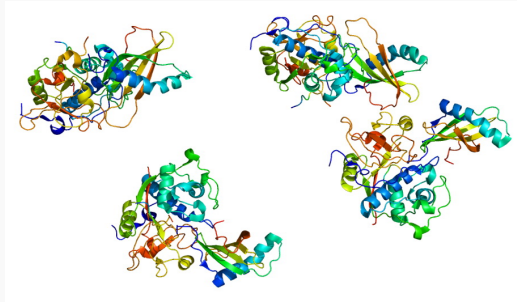
OfficialSymbol	CTSH
Pathways	Lysosome
GENE INFORMATION	
Gene Name	CTSHcathepsin H [Homo sapiens]
Synonyms	CTSH; cathepsin H; pro-cathepsinH; CPSB; ACC-4; ACC-5; MGC1519; minichain; DKFZp686B24257; aleurain;cathepsin B3; cathepsin BA; N-benzoylarginine-beta-naphthylamide hydrolase;EC 3.4.22.16; Cathepsin H mini chain; Cathepsin H heavy chain; Cathepsin Hlight chain; OTTHUMP00000185564; Pro-cathepsin H; Cathepsin H
Gene ID	1512
mRNA Refseq	NM_004390
Protein Refseq	NP_004381
MIM	116820
UniProt ID	P09668
Chromosome Location	15q25.1
Function	cysteine-typeendopeptidase activity; peptidase activity; cysteine-type peptidaseactivity; kininogen binding; protein binding

 Tel: 1-631-559-9269 1-516-512-3133

 Email: info@creative-biomart.com  Fax: 1-631-938-8127

 45-1 Ramsey Road, Shirley, NY 11967, USA

**PDBrendering based
on 1nb3.**



 Tel: 1-631-559-9269 1-516-512-3133

 Email: info@creative-biomart.com  Fax: 1-631-938-8127

 45-1 Ramsey Road, Shirley, NY 11967, USA