

Recombinant Human CTSH protein, His & T7-tagged

Cat. No. CTSH-8180H Lot. No. (See product label)

SPECIFICATION

Product Overview	Recombinant Human CTSH aa. (Ala23~Val335 (Accession # P09668)) fused with N-terminal His & T7 tag was produced in E. coli cells.
Species	Human
Source	E.coli
ProteinLength	Ala23~Val335
Description	The protein encoded by this gene is a lysosomal cysteine proteinase important in the overall degradation of lysosomal proteins. It is composed of a dimer of disulfide-linked heavy and light chains, both produced from a single protein precursor. The encoded protein, which belongs to the peptidase C1 protein family, can act both as an aminopeptidase and as an endopeptidase. Increased expression of this gene has been correlated with malignant progression of prostate tumors. Alternate splicing of this gene results in multiple transcript variants encoding different isoforms.
Form	Freeze-dried powder
Molecular Mass	Predicted Molecular Mass: 38.9kDa.
Endotoxin	<1.0EU per 1ug (determined by the LAL method)
Purity	>90%

 Tel: 1-631-559-9269 1-516-512-3133

 Email: info@creative-biomart.com  Fax: 1-631-938-8127

 45-1 Ramsey Road, Shirley, NY 11967, USA

Characteristic	The isoelectric point is 8.4.
Applications	SDS-PAGE; WB; ELISA; IP.
Stability	The thermal stability is described by the loss rate of the target protein. The loss rate was determined by accelerated thermal degradation test, that is, incubate the protein at 37°C for 48h, and no obvious degradation and precipitation were observed. (Referring from China Biological Products Standard, which was calculated by the Arrhenius equation.) The loss of this protein is less than 5% within the expiration date under appropriate storage condition.
Storage	Avoid repeated freeze/thaw cycles. Store at 2-8°C for one month. Aliquot and store at -80°C for 12 months.
Storage Buffer	Supplied as lyophilized form in 20mM Tris, 150mM NaCl, pH8.0, containing 1mM EDTA, 1mM DTT, 0.01% sarcosyl, 5% trehalose, and preservative.
Reconstitution	Reconstitute in sterile ddH ₂ O.

GENE INFORMATION

Gene Name	CTSH cathepsin H [Homo sapiens (human)]
Official Symbol	CTSH
Synonyms	CTSH; cathepsin H; ACC4; ACC5; CPSB; ACC-4; ACC-5; pro-cathepsin H; N-benzoylarginine-beta-naphthylamide hydrolase; aleurain; cathepsin B3; cathepsin BA
Gene ID	1512
mRNA Refseq	NM_004390.4

 Tel: 1-631-559-9269 1-516-512-3133

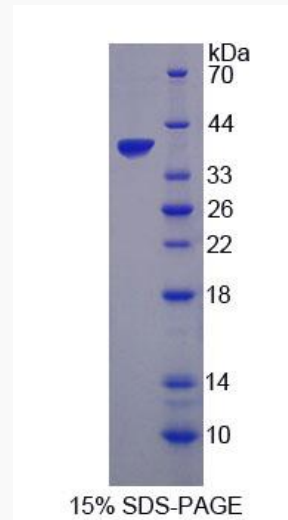
 Email: info@creative-biomart.com  Fax: 1-631-938-8127

 45-1 Ramsey Road, Shirley, NY 11967, USA

Protein Refseq NP_004381.2

UniProt ID P09668

SDS-PAGE



 Tel: 1-631-559-9269 1-516-512-3133

 Email: info@creative-biomart.com  Fax: 1-631-938-8127

 45-1 Ramsey Road, Shirley, NY 11967, USA