

## Recombinant Human CTSK Protein, GST-tagged

Cat. No. CTSK-2111H Lot. No. (See product label)

### SPECIFICATION

<b>Product Overview</b>	Human CTSK full-length ORF ( AAH16058, 15 a.a. - 329 a.a.) recombinant protein with GST-tag at N-terminal.
<b>Species</b>	Human
<b>Source</b>	Wheat Germ
<b>Description</b>	The protein encoded by this gene is a lysosomal cysteine proteinase involved in bone remodeling and resorption. This protein, which is a member of the peptidase C1 protein family, is predominantly expressed in osteoclasts. However, the encoded protein is also expressed in a significant fraction of human breast cancers, where it could contribute to tumor invasiveness. Mutations in this gene are the cause of pycnodysostosis, an autosomal recessive disease characterized by osteosclerosis and short stature. [provided by RefSeq, Apr 2013]
<b>Molecular Mass</b>	60.28 kDa
<b>AA Sequence</b>	ALYPEEILDTHWELWKKTHRKQYNNKVDEISRRLIWEKNLKYISIHNLEASLGVHTYE LAMNHLGDMTSEEVVQKMTGLKVPLSHSRSDNTLYIPEWEGRAPDSVDYRKKGYV TPVKNQGQCGSCWAFSSVGALEGQLKKKTGKLLNLSPQNLVDCVSENDGCGGGY MTNAFQYVQKNRGIDSEDAYPYVGQEESCMYNPTGKAAKCRGYREIPEGNEKALK RAVARVGPVSVDAIDASLTSFQFYSGVYYDESCNSDNLNHAVLAVGYGIQKGNKHW IKNSWGKNGKGYILMARNKNNACGIANLASFPKM
<b>Applications</b>	Enzyme-linked Immunoabsorbent Assay

 Tel: 1-631-559-9269 1-516-512-3133

 Email: [info@creative-biomart.com](mailto:info@creative-biomart.com)  Fax: 1-631-938-8127

 45-1 Ramsey Road, Shirley, NY 11967, USA

Western Blot (Recombinant protein)  
 Antibody Production  
 Protein Array

<b>Notes</b>	Best use within three months from the date of receipt of this protein.
<b>Storage</b>	Store at -80 centigrade. Aliquot to avoid repeated freezing and thawing.
<b>Storage Buffer</b>	50 mM Tris-HCl, 10 mM reduced Glutathione, pH=8.0 in the elution buffer.

## GENE INFORMATION

<b>Gene Name</b>	CTSK cathepsin K [ Homo sapiens ]
<b>Official Symbol</b>	CTSK
<b>Synonyms</b>	CTSK; cathepsin K; cathepsin K (pseudodeficiency) , CTSO, CTSO2, PYCD; PKND; cathepsin O; cathepsin X; cathepsin O1; cathepsin O2; CTSO; PYCD; CTSO2; CTSO1; CTSO2; MGC23107;
<b>Gene ID</b>	1513
<b>mRNA Refseq</b>	NM_000396
<b>Protein Refseq</b>	NP_000387
<b>MIM</b>	601105
<b>UniProt ID</b>	P43235

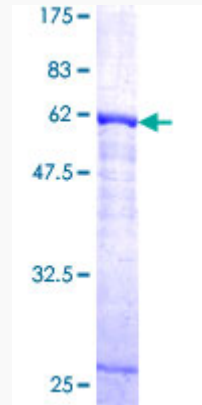
 Tel: 1-631-559-9269 1-516-512-3133

 Email: [info@creative-biomart.com](mailto:info@creative-biomart.com)  Fax: 1-631-938-8127

 45-1 Ramsey Road, Shirley, NY 11967, USA

**Quality Control**

**Testing:**



12.5% SDS-PAGE Stained with Coomassie Blue.

 Tel: 1-631-559-9269 1-516-512-3133

 Email: [info@creative-biomart.com](mailto:info@creative-biomart.com)  Fax: 1-631-938-8127

 45-1 Ramsey Road, Shirley, NY 11967, USA