

Recombinant Rat CTSK Protein (115-329 aa), His-tagged

Cat. No. CTSK-439R **Lot. No.** (See product label)

SPECIFICATION

Product Overview	Recombinant Rat CTSK Protein (115-329 aa) is produced by E. coli expression system. This protein is fused with a 6xHis tag at the N-terminal. Protein Description: Full Length of Mature Protein.
Species	Rat
Source	E.coli
ProteinLength	115-329 aa
Description	Closely involved in osteoclastic bone resorption and may participate partially in the disorder of bone remodeling. Displays potent endoprotease activity against fibrinogen at acid pH. May play an important role in Extracellular domain matrix degradation.
Form	Tris-based buffer, 50% glycerol
Molecular Mass	27.5 kDa
AA Sequence	VPDSIDYRKKGYVTPVKNQGQCGSCWAFSSAGALEGQLKKKTGKLLALSPQNLVDC VSENYGCGGGYMTTAFQYVQQNGGIDSEDAYPYVGQDESCMYNATAKAAKCRGY REIPVGNEKALKRAVARVGPVSVSIDASLTSFQFYSRGVYYDENC DRDNVNHAVLVV GYGTQKGNKYWIIKNSWGESWGNKGYVLLARNKNNACGITNLASFPKM
Purity	> 90% as determined by SDS-PAGE.

 Tel: 1-631-559-9269 1-516-512-3133

 Email: info@creative-biomart.com  Fax: 1-631-938-8127

 45-1 Ramsey Road, Shirley, NY 11967, USA

Notes	Repeated freezing and thawing is not recommended. Store working aliquots at 4 centigrade for up to one week.
Storage	The shelf life is related to many factors, storage state, buffer ingredients, storage temperature and the stability of the protein itself. Generally, the shelf life of liquid form is 6 months at -20 centigrade/-80 centigrade. The shelf life of lyophilized form is 12 months at -20 centigrade/-80 centigrade.
Concentration	A hardcopy of COA with concentration instruction is sent along with the products.

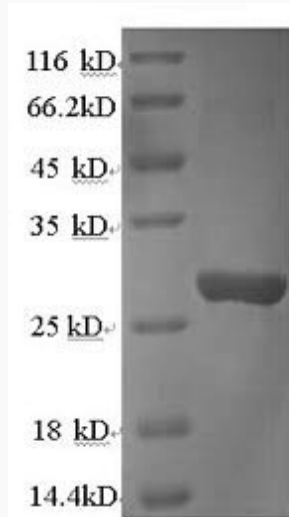
GENE INFORMATION

Gene Name	Ctsk cathepsin K [<i>Rattus norvegicus</i>]
Official Symbol	CTSK
Synonyms	CTSK; cathepsin K;
Gene ID	29175
mRNA Refseq	NM_031560
Protein Refseq	NP_113748
UniProt ID	O35186

 Tel: 1-631-559-9269 1-516-512-3133

 Email: info@creative-biomart.com  Fax: 1-631-938-8127

 45-1 Ramsey Road, Shirley, NY 11967, USA



(Tris-Glycine gel) Discontinuous SDS-PAGE (reduced) with 5% enrichment gel and 15% separation gel.

 Tel: 1-631-559-9269 1-516-512-3133

 Email: info@creative-biomart.com  Fax: 1-631-938-8127

 45-1 Ramsey Road, Shirley, NY 11967, USA