

## Active Recombinant Rat Ctsk Protein

**Cat. No.** CTSK-440R    **Lot. No.** (See product label)

### SPECIFICATION

<b>Product Overview</b>	Recombinant Rat Ctsk Protein (115-329 aa) without tag was expressed in E. coli.
<b>Species</b>	Rat
<b>Source</b>	E.coli
<b>ProteinLength</b>	115-329 a.a.
<b>Description</b>	Cathepsin K, a member of the papain cysteine proteinase family is the predominant proteinase responsible for the resorption of the bone matrix. Cathepsin cleaves proteins such as collagen type I, collagen type II and osteonectin, thereby playing a role in bone remodeling and resorption in osteoporosis, osteolytic bone metastasis and rheumatoid arthritis (Bromme and Okamoto, 1995; Drake, F. et al 1996; Bossard et al, 1996).
<b>Bio-activity</b>	The specific activity is >500 mU/mg (1U = 1 μmole/min/mg) as measured by Cathepsin K Activity Assay Kit.
<b>Molecular Mass</b>	23.5 kDa (115-329 aa)
<b>Purity</b>	≥ 90% by SDS-PAGE analysis
<b>Usage</b>	For Research Use Only! Not For Use in Humans.
<b>Storage</b>	Store at -80 centigrade

 Tel: 1-631-559-9269    1-516-512-3133

 Email: [info@creative-biomart.com](mailto:info@creative-biomart.com)     Fax: 1-631-938-8127

 45-1 Ramsey Road, Shirley, NY 11967, USA

<b>Storage Buffer</b>	0.5 mg/mL solution in 25 mM Na <sub>2</sub> HPO <sub>4</sub> and 500 mM NaCl (pH 7.0) with 50% glycerol.
-----------------------	--

<b>Shipping</b>	Dry Ice
-----------------	---------

## GENE INFORMATION

<b>Gene Name</b>	Ctsk cathepsin K [ Rattus norvegicus (Norway rat) ]
------------------	---

<b>Official Symbol</b>	Ctsk
------------------------	------

<b>Synonyms</b>	Ctsk; cathepsin K; cathepsin K; EC 3.4.22.38; CTSK; CTSO3; CTSO
-----------------	---

<b>Gene ID</b>	29175
----------------	-------

<b>mRNA Refseq</b>	NM_031560
--------------------	-----------

<b>Protein Refseq</b>	NP_113748
-----------------------	-----------

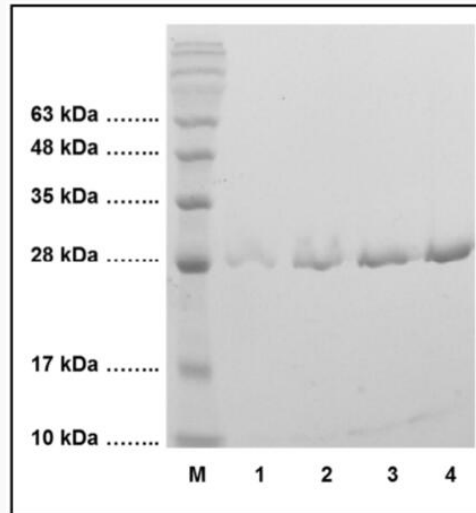
<b>UniProt ID</b>	O35186
-------------------	--------

 Tel: 1-631-559-9269 1-516-512-3133

 Email: [info@creative-biomart.com](mailto:info@creative-biomart.com)  Fax: 1-631-938-8127

 45-1 Ramsey Road, Shirley, NY 11967, USA

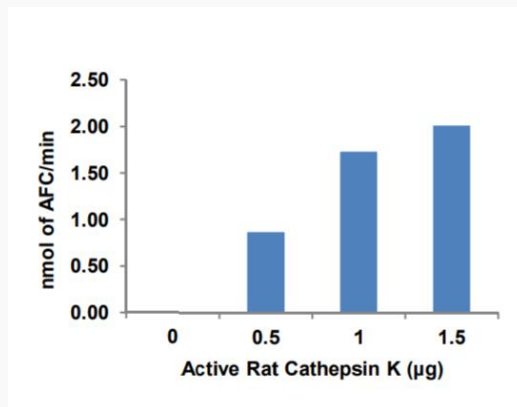
**SDS-PAGE**



M: Protein Marker

- 1: Rat Cathepsin K (2 µg)
- 2: Rat Cathepsin K (5 µg)
- 3: Rat Cathepsin K (10 µg)
- 4: Rat Cathepsin K (15 µg)

**Activity**



Measurement of r-Cathepsin K activity by Cathepsin K Activity Assay Kit

Tel: 1-631-559-9269 1-516-512-3133

Email: [info@creative-biomart.com](mailto:info@creative-biomart.com) Fax: 1-631-938-8127

45-1 Ramsey Road, Shirley, NY 11967, USA