

Recombinant Human CTSL Protein (Thr18-Val333), C-His tagged

Cat. No. CTSL-1063H Lot. No. (See product label)

SPECIFICATION

Product Overview

Recombinant human CTSL (Thr18-Val333) fused with the C-terminal His tag was expressed in Mammalian cells.

Species

Human

Source

Mammalian Cells

ProteinLength

Thr18-Val333

Description

The protein encoded by this gene is a lysosomal cysteine proteinase that plays a major role in intracellular protein catabolism. Its substrates include collagen and elastin, as well as alpha-1 protease inhibitor, a major controlling element of neutrophil elastase activity. The encoded protein has been implicated in several pathologic processes, including myofibril necrosis in myopathies and in myocardial ischemia, and in the renal tubular response to proteinuria. This protein, which is a member of the peptidase C1 family, is a dimer composed of disulfide-linked heavy and light chains, both produced from a single protein precursor. Additionally, this protein cleaves the S1 subunit of the SARS-CoV-2 spike protein, which is necessary for entry of the virus into the cell.

Form

Lyophilized powder/frozen liquid

Molecular Mass

39.08 kDa

 Tel: 1-631-559-9269 1-516-512-3133

 Email: info@creative-biomart.com  Fax: 1-631-938-8127

 45-1 Ramsey Road, Shirley, NY 11967, USA

Purity	>90% as determined by SDS-PAGE.
Notes	For research use only.
Storage	Use a manual defrost freezer and avoid repeated freeze thaw cycles. Store at 2 to 8 centigrade for one week. Store at -20 to -80 centigrade for twelve months from the date of receipt.
Storage Buffer	Lyophilized from PBS, pH 7.4, 1mM EDTA, 4% trehalose, 1% mannitol.
Reconstitution	Reconstitute in sterile water for a stock solution.
Shipping	They are shipped out with dry ice/blue ice unless customers require otherwise.

GENE INFORMATION

Gene Name	CTSL cathepsin L [Homo sapiens (human)]
Official Symbol	CTSL
Synonyms	CTSL; cathepsin L; MEP; CATL; CTSL1; procathepsin L; cathepsin L1; major excreted protein; EC 3.4.22.15
Gene ID	1514
mRNA Refseq	NM_145918
Protein Refseq	NP_666023
MIM	116880

 Tel: 1-631-559-9269 1-516-512-3133

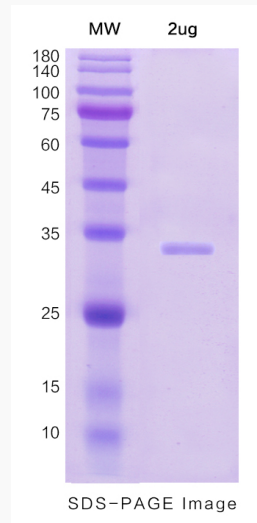
 Email: info@creative-biomart.com  Fax: 1-631-938-8127

 45-1 Ramsey Road, Shirley, NY 11967, USA

UniProt ID

P07711

SDS-PAGE



 Tel: 1-631-559-9269 1-516-512-3133

 Email: info@creative-biomart.com  Fax: 1-631-938-8127

 45-1 Ramsey Road, Shirley, NY 11967, USA