

## Recombinant Human CTSL protein, His-tagged

**Cat. No.** CTSL-137H    **Lot. No.** (See product label)

### SPECIFICATION

<b>Product Overview</b>	Recombinant Human CTSL(18-333 aa) fused with His tag at N-terminal was expressed in E. coli.
<b>Species</b>	Human
<b>Source</b>	E.coli
<b>ProteinLength</b>	18-333 a.a.
<b>Description</b>	CTSL, also known as cathepsin L1 isoform 1, is a lysosomal cysteine proteinase that plays a major role in intracellular protein catabolism. Its substrates include collagen and elastin, as well as alpha-1 protease inhibitor, a major controlling element of neutrophil elastase activity. The encoded protein has been implicated in several pathologic processes, including myofibril necrosis in myopathies and in myocardial ischemia, and in the renal tubular response to proteinuria. This protein, which is a member of the peptidase C1 family, is a dimer composed of disulfide-linked heavy and light chains, both produced from a single protein precursor. Multiple alternatively spliced transcript variants have been found for this gene.
<b>Form</b>	Liquid. In 20mM Tris-HCl(pH8.0) containing 10% glycerol
<b>Molecular Mass</b>	38.3kDa (339 aa) confirmed by MALDI-TOF
<b>AA Sequence</b>	MGSSHHHHHH SGLVPRGSH MGSTLTFDHS LEAQWTKWKA MHNRLYGMNE EGWRRAVWEK NMKMIELHNQ EYREGKHSFT MAMNAFGDMT

 Tel: 1-631-559-9269    1-516-512-3133

 Email: [info@creative-biomart.com](mailto:info@creative-biomart.com)     Fax: 1-631-938-8127

 45-1 Ramsey Road, Shirley, NY 11967, USA

SEEFRQVMNG FQNRKPRKGK VFQEPLFYEA PRSVDWREKG YVTPVKNQGG  
 CGSCWAFSAT GALEGQMFRK TGRLLSLSEQ NLVDCSGPQG  
 NEGCNGGLMD YAFQYVQDNG GLDSEESYPY EATEESCKYN PKYSVANDTG  
 FVDIPKQEKA LMKAVATVGP ISVAIDAGHE SFLFYKEGIY  
 FEPDCSSEDM DHGVLVVGYG FESTESDNNK YWLVKNSWGE EWGMGGYVKM  
 AKDRRNHCGI ASAASYPTV

**Endotoxin** < 1.0 EU per 1 microgram of protein (determined by LAL method)

**Purity** > 85% by SDS - PAGE

**Applications** SDS-PAGE

**Storage** Can be stored at +4 centigrade short term (1-2 weeks). For long term storage, aliquot and store at -20 centigrade or -70 centigrade. Avoid repeated freezing and thawing cycles.

**Concentration** 1 mg/ml (determined by Bradford assay)

## GENE INFORMATION

**Gene Name** [CTSL cathepsin L \[ Homo sapiens \]](#)

**Official Symbol** [CTSL](#)

**Synonyms** MEP; CATL; CTSL1; cathepsin L1; major excreted protein

**Gene ID** [1514](#)

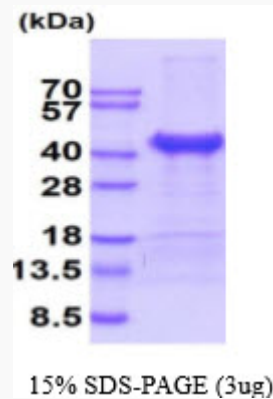
**mRNA Refseq** [NM\\_001257972](#)

 Tel: 1-631-559-9269 1-516-512-3133

 Email: [info@creative-biomart.com](mailto:info@creative-biomart.com)  Fax: 1-631-938-8127

 45-1 Ramsey Road, Shirley, NY 11967, USA

<b>Protein Refseq</b>	NP_001244901
<b>MIM</b>	116880
<b>UniProt ID</b>	P07711
<b>Chromosome Location</b>	9q21.33
<b>Pathway</b>	Adaptive Immune System, organism-specific biosystem; Collagen degradation, organism-specific biosystem; Lysosome, conserved biosystem
<b>Function</b>	collagen binding; cysteine-type endopeptidase activity; proteoglycan binding



 Tel: 1-631-559-9269 1-516-512-3133

 Email: [info@creative-biomart.com](mailto:info@creative-biomart.com)  Fax: 1-631-938-8127

 45-1 Ramsey Road, Shirley, NY 11967, USA