

Recombinant Full Length Human CTSL Protein, C-Flag-tagged

Cat. No. CTSL-1680HFL Lot. No. (See product label)

SPECIFICATION

Product Overview	Recombinant Full Length Human CTSL Protein, fused to Flag-tag at C-terminus, was expressed in Mammalian cells.
Species	Human
Source	Mammalian Cells
Description	The protein encoded by this gene is a lysosomal cysteine proteinase that plays a major role in intracellular protein catabolism. Its substrates include collagen and elastin, as well as alpha-1 protease inhibitor, a major controlling element of neutrophil elastase activity. The encoded protein has been implicated in several pathologic processes, including myofibril necrosis in myopathies and in myocardial ischemia, and in the renal tubular response to proteinuria. This protein, which is a member of the peptidase C1 family, is a dimer composed of disulfide-linked heavy and light chains, both produced from a single protein precursor. Additionally, this protein cleaves the S1 subunit of the SARS-CoV-2 spike protein, which is necessary for entry of the virus into the cell.
Form	25 mM Tris HCl, pH 7.3, 100 mM glycine, 10% glycerol.
Molecular Mass	35.8 kDa
AA Sequence	MNPTLILAAAFCLGIASATLTFDHSLEAQWTKWKAMHNRLYGMNEEGWRRRAVWEKN VKMIELHNQEYREGK HSFTMAMNAFGDMTSEEFRQVMNGFQNRKPRKGKVFQEP LFYEAPRSVDWREKGYVTPVKNQGQCGSCWA FSATGALEGQMFRKTGRLISLSE

 Tel: 1-631-559-9269 1-516-512-3133

 Email: info@creative-biomart.com  Fax: 1-631-938-8127

 45-1 Ramsey Road, Shirley, NY 11967, USA

QNLVDCSGPQGNEGCNGGLMDYAFQYVQDNGGLDSEESYPYEATEES CKYNPKY
 SVANDTGFDIPKQEKALMKAVATVGPISVAIDAGHESFLFYKEGIYFEPDCSSEDMD
 HGVLV
 VGYGFESTESDNNKYWLKNSWGEEWGMGGYVKMAKDRRNHCGIASAASYPTVT
 RTRPLEQKLISEEDLAANDILDYKDDDDKV

Purity > 80% as determined by SDS-PAGE and Coomassie blue staining.

Stability Stable for 12 months from the date of receipt of the product under proper storage and handling conditions. Avoid repeated freeze-thaw cycles.

Storage Store at -80 centigrade.

Concentration >50 ug/mL as determined by microplate BCA method.

Preparation Recombinant protein was captured through anti-DDK affinity column followed by conventional chromatography steps.

Protein Families Druggable Genome, Protease

Protein Pathways Antigen processing and presentation, Lysosome

Full Length Full L.

GENE INFORMATION

Gene Name CTSL cathepsin L [Homo sapiens (human)]

Official Symbol CTSL

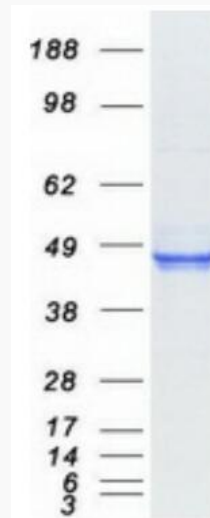
Synonyms MEP; CATL; CTSL1

 Tel: 1-631-559-9269 1-516-512-3133

 Email: info@creative-biomart.com  Fax: 1-631-938-8127

 45-1 Ramsey Road, Shirley, NY 11967, USA

Gene ID	1514
mRNA Refseq	NM_001912.5
Protein Refseq	NP_001903.1
MIM	116880
UniProt ID	P07711



Coomassie blue staining of purified CTSL protein.

Tel: 1-631-559-9269 1-516-512-3133

Email: info@creative-biomart.com Fax: 1-631-938-8127

45-1 Ramsey Road, Shirley, NY 11967, USA