

# Recombinant Human CTSL Protein, Myc/DDK-tagged, C13 and N15-labeled

**Cat. No.** CTSL-4100H    **Lot. No.** (See product label)

## SPECIFICATION

<b>Product Overview</b>	CTSL1 MS Standard C13 and N15-labeled recombinant protein (NP_666023) with a C-terminal MYC/DDK tag, was expressed in HEK293 cells.
<b>Species</b>	Human
<b>Source</b>	HEK293
<b>Description</b>	The protein encoded by this gene is a lysosomal cysteine proteinase that plays a major role in intracellular protein catabolism. Its substrates include collagen and elastin, as well as alpha-1 protease inhibitor, a major controlling element of neutrophil elastase activity. The encoded protein has been implicated in several pathologic processes, including myofibril necrosis in myopathies and in myocardial ischemia, and in the renal tubular response to proteinuria. This protein, which is a member of the peptidase C1 family, is a dimer composed of disulfide-linked heavy and light chains, both produced from a single protein precursor. Additionally, this protein may be necessary for entry of SARS-CoV-2 (COVID-19 virus) into the cell.
<b>Molecular Mass</b>	37.5 kDa
<b>AA Sequence</b>	MNPTLILAAFLGLIASATLTFDHSLEAQWTKWKAMHNRLYGMNEEGWRRRAVWEKN VKMIELHNQEYREGKHSFTMAMNAFGDMTSEEFRQVMNGFQNRKPRKGKVFQEPL FYEAPRSVDWREKGYVTPVKNQGGQCGSCWAFSATGALEGQMFRKTGRLISLSEQN LVDCSGPQGNEGCNGGLMDYAFQYVQDNGGLDSEESYPYEATEESCKYNPKYSV

 Tel: 1-631-559-9269    1-516-512-3133

 Email: [info@creative-biomart.com](mailto:info@creative-biomart.com)     Fax: 1-631-938-8127

 45-1 Ramsey Road, Shirley, NY 11967, USA

ANDTGFVDIPKQEKALMKAVATVGPISVAIDAGHESFLFYKEGIYFEPDCSSEDMDH  
 GVLVVGYGFESESDNNKYWLVKNSWGEEWGMGGYVKMAKDRRNHCGIASAASY  
 PTVTRTRPLEQKLISEEDLAANDILDYKDDDDKV

**Purity** > 80% as determined by SDS-PAGE and Coomassie blue staining

**Stability** Stable for 3 months from receipt of products under proper storage and handling conditions.

**Storage** Store at -80 centigrade. Avoid repeated freeze-thaw cycles.

**Concentration** 50 µg/mL as determined by BCA

**Storage Buffer** 100 mM glycine, 25 mM Tris-HCl, pH 7.3.

## GENE INFORMATION

**Gene Name** CTSL cathepsin L [ Homo sapiens (human) ]

**Official Symbol** CTSL

**Synonyms** CTSL; cathepsin L; MEP; CATL; CTSL1; procathepsin L; cathepsin L1; major excreted protein; EC 3.4.22.15

**Gene ID** 1514

**mRNA Refseq** NM\_145918

**Protein Refseq** NP\_666023

**MIM** 116880

 Tel: 1-631-559-9269 1-516-512-3133

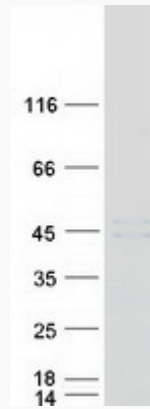
 Email: [info@creative-biomart.com](mailto:info@creative-biomart.com)  Fax: 1-631-938-8127

 45-1 Ramsey Road, Shirley, NY 11967, USA

UniProt ID

P07711

SDS-PAGE



 Tel: 1-631-559-9269 1-516-512-3133

 Email: [info@creative-biomart.com](mailto:info@creative-biomart.com)  Fax: 1-631-938-8127

 45-1 Ramsey Road, Shirley, NY 11967, USA