

Recombinant Pig CTSL Protein, His/GST-tagged

Cat. No. CTSL-423P **Lot. No.** (See product label)

SPECIFICATION

Product Overview	Recombinant Pig CTSL(Pro115~Gly288) fused with His/GST tag at N-terminal was expressed in E. coli.
Species	Pig
Source	E.coli
ProteinLength	Pro115~Gly288
Description	CTSL played an important role in many functions.
Form	PBS, pH7.4, containing 0.01% SKL, 1mM DTT, 5% Trehalose and Proclin300.
Molecular Mass	50.8kDa
Identity	Reconstitute in PBS or others
Endotoxin	<1.0EU per 1g (determined by the LAL method)
Purity	> 95%
Applications	Positive Control; Immunogen; SDS-PAGE; WB. If bio-activity of the protein is needed, please check active protein
Stability	The thermal stability is described by the loss rate. The loss rate was determined by

 Tel: 1-631-559-9269 1-516-512-3133

 Email: info@creative-biomart.com  Fax: 1-631-938-8127

 45-1 Ramsey Road, Shirley, NY 11967, USA

accelerated thermal degradation test, that is, incubate the protein at 37 centigrade for 48h, and no obvious degradation and precipitation were observed. The loss rate is less than 5% within the expiration date under appropriate storage condition.

Storage

Avoid repeated freeze/thaw cycles. Store at 2-8 centigrade for one month. Aliquot and store at -80 centigrade for 12 months.

Reconstitution

Reconstitute in PBS or others

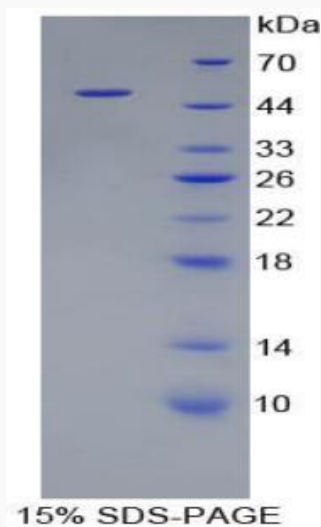
GENE INFORMATION

Gene Name CTSL cathepsin L [*Sus scrofa*]

Official Symbol CTSL

Synonyms CTSL; cathepsin L

Gene ID 100515919



Tel: 1-631-559-9269 1-516-512-3133

Email: info@creative-biomart.com Fax: 1-631-938-8127

45-1 Ramsey Road, Shirley, NY 11967, USA