

Recombinant Human cathepsin L1

Cat. No. CTSL1-91H Lot. No. (See product label)

SPECIFICATION

Product Overview	Recombinant Human Cathepsin L encoding a.a. 1-87 expressed in <i>E.coli</i> , 38 kDa.
Species	Human
Source	<i>E.coli</i>
Protein Length	1-87 a.a.
Description	Cathepsins B, C, H, L, S, V, X/Z/P and 1 are cysteine proteases of the papain family. Cathepsin C is also known as DPPI (dipeptidyl-peptidase I). Cathepsin A is a serine carboxypeptidase and Cathepsin D and E are aspartic proteases. As lysosomal proteases, cathepsins play an important role in protein degradation. Because of their redistribution or increased levels in human and animal tumors, cathepsins may have a role in invasion and metastasis. Cathepsins are synthesized as inactive proenzymes and processed to become mature and active enzymes. Endogenous protein inhibitors, such as cystatins and some serpins, inhibit active enzymes.
Presentation	Recombinant Human Cathepsin L protein at 100g/ml in 50mM Tris-Acetate, pH7.5, 1mM EDTA and 20% Glycerol.
Applications	•ELISA •Inhibition Assays •Western Blotting
Characterization	On SDS-PAGE commassie blue stained gel, the purified recombinant protein shows a band at 38 kDa.

 Tel: 1-631-559-9269 1-516-512-3133

 Email: info@creative-biomart.com  Fax: 1-631-938-8127

 45-1 Ramsey Road, Shirley, NY 11967, USA

Storage Store vial at -20°C to -80°C. When stored at the recommended temperature, this protein is stable for 12 months.

GENE INFORMATION

Gene Name CTSL1 cathepsin L1 [Homo sapiens]

Synonyms CTSL1; cathepsin L1; MEP; CATL; CTSL; FLJ31037; CTSL1; cathepsin L; EC 3.4.22.15; OTTHUMP00000021601; OTTHUMP00000021602; OTTHUMP00000063566; Major excreted protein

Gene ID 1514

mRNA Refseq NM_001912

Protein Refseq NP_001903

MIM 116880

UniProt ID P07711

Chromosome Location 9q21.33

Pathway Antigen processing and presentation; Lysosome; Diabetes pathways;

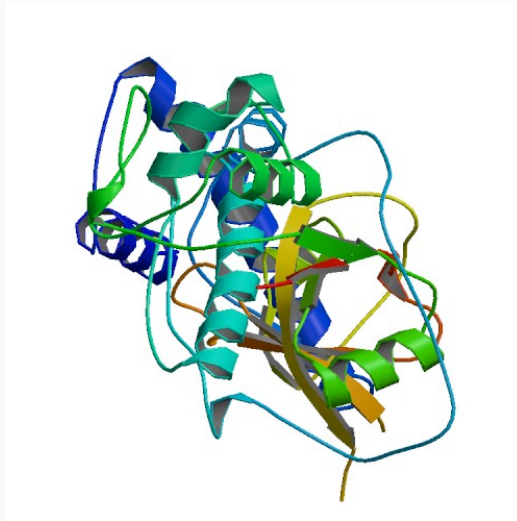
Function aminopeptidase activity; cysteine-type endopeptidase activity; kininogen binding; peptidase activity; peptide binding

 Tel: 1-631-559-9269 1-516-512-3133

 Email: info@creative-biomart.com  Fax: 1-631-938-8127

 45-1 Ramsey Road, Shirley, NY 11967, USA

PDB rendering based
on 1cj.



 Tel: 1-631-559-9269 1-516-512-3133

 Email: info@creative-biomart.com  Fax: 1-631-938-8127

 45-1 Ramsey Road, Shirley, NY 11967, USA