

## Active Recombinant Human CTSS protein, His-tagged

Cat. No. CTSS-2695H Lot. No. (See product label)

### SPECIFICATION

<b>Product Overview</b>	Active Recombinant Human Cathepsin S Protein is produced by HEK293 cells expression system. The target protein is expressed with sequence (Gln17-Ile331) of human Cathepsin S/CTSS (Accession #NP_004070.3) fused with an 8xHis tag at the C-terminus.
<b>Species</b>	Human
<b>Source</b>	HEK293
<b>ProteinLength</b>	Gln17-Ile331
<b>Form</b>	Lyophilized from a 0.22 µm filtered solution of PBS, pH 7.4.
<b>Bio-activity</b>	Measured by its ability to cleave the fluorogenic peptide substrate, Mca-RPKPVE-Nval-WRK(Dnp)-NH <sub>2</sub> . The specific activity is >1390 pmol/min/µg.
<b>Endotoxin</b>	< 0.1 EU/µg of the protein by LAL method.
<b>Purity</b>	> 95% by SDS-PAGE.
<b>Storage</b>	Store the lyophilized protein at -20°C to -80 °C for long term. After reconstitution, the protein solution is stable at -20 °C for 3 months, at 2-8 °C for up to 1 week.
<b>Reconstitution</b>	Reconstitute to a concentration of 0.1-0.5 mg/mL in sterile distilled water.

 Tel: 1-631-559-9269 1-516-512-3133

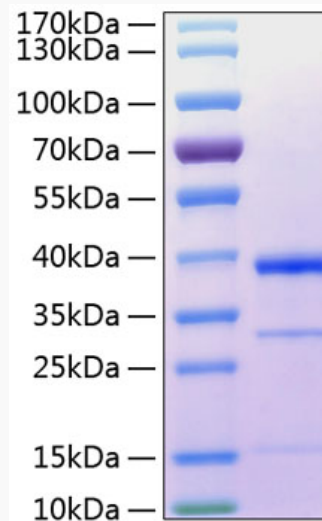
 Email: [info@creative-biomart.com](mailto:info@creative-biomart.com)  Fax: 1-631-938-8127

 45-1 Ramsey Road, Shirley, NY 11967, USA

## GENE INFORMATION

<b>Gene Name</b>	CTSS cathepsin S [ Homo sapiens ]
<b>Official Symbol</b>	CTSS
<b>Synonyms</b>	CTSS; cathepsin S; MGC3886; FLJ50259;
<b>Gene ID</b>	1520
<b>mRNA Refseq</b>	NM_001199739
<b>Protein Refseq</b>	NP_001186668
<b>MIM</b>	116845
<b>UniProt ID</b>	P25774

### SDS-PAGE



Tel: 1-631-559-9269 1-516-512-3133

Email: [info@creative-biomart.com](mailto:info@creative-biomart.com) Fax: 1-631-938-8127

45-1 Ramsey Road, Shirley, NY 11967, USA