

## Active Recombinant Human CTSS protein, His-tagged

**Cat. No.** CTSS-282H    **Lot. No.** (See product label)

### SPECIFICATION

<b>Product Overview</b>	Active Recombinant Human CTSS protein(NP_004070.3) (Met 1-Ile 331) with a carboxy-terminal polyhistidine tag was expressed in HEK293.
<b>Species</b>	Human
<b>Source</b>	HEK293
<b>ProteinLength</b>	1-331 aa
<b>Form</b>	Lyophilized from sterile PBS, pH 7.4.
<b>Bio-activity</b>	Measured by its ability to cleave a fluorogenic peptide substrate, (7-methoxycoumarin-4-yl) acetyl-Arg-Pro-Lys-Pro-Val-Glu-Nva-Trp-Arg-Lys (2, 4-dinitrophenyl)-NH <sub>2</sub> . Cleavage of ES002 can be measured using excitation and emission wavelengths at 320 nm and 405 nm, respectively. The specific activity is >300 pmoles/min/μg.
<b>Molecular Mass</b>	The secreted recombinant human CTSS consists of 326 amino acids with the predicted molecular mass of 37 kDa as estimated by SDS-PAGE under reducing conditions.
<b>Endotoxin</b>	< 1.0 EU per μg protein as determined by the LAL method.
<b>Purity</b>	> 97 % as determined by SDS-PAGE
<b>Storage</b>	Store it under sterile conditions at -20°C to -80°C upon receiving. Recommend to

 Tel: 1-631-559-9269    1-516-512-3133

 Email: [info@creative-biomart.com](mailto:info@creative-biomart.com)     Fax: 1-631-938-8127

 45-1 Ramsey Road, Shirley, NY 11967, USA

aliquot the protein into smaller quantities for optimal storage. Avoid repeated freeze-thaw cycles.

**Reconstitution**

It is recommended that sterile water be added to the vial to prepare a stock solution of 0.2 ug/ul. Centrifuge the vial at 4°C before opening to recover the entire contents.

**GENE INFORMATION**

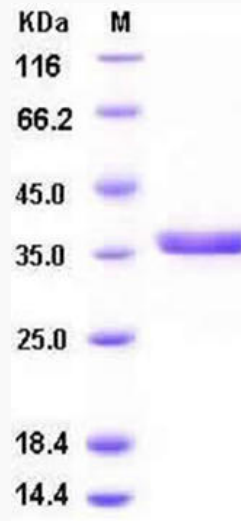
<b>Gene Name</b>	CTSS cathepsin S [ Homo sapiens ]
<b>Official Symbol</b>	CTSS
<b>Synonyms</b>	CTSS; cathepsin S; MGC3886; FLJ50259;
<b>Gene ID</b>	1520
<b>mRNA Refseq</b>	NM_001199739
<b>Protein Refseq</b>	NP_001186668
<b>MIM</b>	116845
<b>UniProt ID</b>	P25774

 Tel: 1-631-559-9269 1-516-512-3133

 Email: [info@creative-biomart.com](mailto:info@creative-biomart.com)  Fax: 1-631-938-8127

 45-1 Ramsey Road, Shirley, NY 11967, USA

**SDS-PAGE**



 Tel: 1-631-559-9269 1-516-512-3133

 Email: [info@creative-biomart.com](mailto:info@creative-biomart.com)  Fax: 1-631-938-8127

 45-1 Ramsey Road, Shirley, NY 11967, USA