

Recombinant Human CTSW Protein, GST-tagged

Cat. No. CTSW-2119H Lot. No. (See product label)

SPECIFICATION

Product Overview	Human CTSW full-length ORF (AAH48255, 22 a.a. - 376 a.a.) recombinant protein with GST-tag at N-terminal.
Species	Human
Source	Wheat Germ
Description	The protein encoded by this gene, a member of the peptidase C1 family, is a cysteine proteinase that may have a specific function in the mechanism or regulation of T-cell cytolytic activity. The encoded protein is found associated with the membrane inside the endoplasmic reticulum of natural killer and cytotoxic T-cells. Expression of this gene is up-regulated by interleukin-2. [provided by RefSeq, Jul 2008]
Molecular Mass	64.79 kDa
AA Sequence	IRGPLRAQDLGPQPLELKEAFKLFQIQFNRSYLSPEEHAHRLDIFAHNLAQAQRLQEE DLGTAEFGVTPFSDLTEEEFGQLYGYRRAAGGVPSMGREIRSEEPESVPPFSCDW RKVAGAI SPIKDQKNCNCWAMAAAGNIETLWRISFWDVDSVQELLDCGRCDG CHGGFVWDAFITVLNNSGLASEKDYPFQGVRAHRCHPKKYQKVAWIQDFIMLQNN EHRIAQYLATYGPITVTINMKPLQLYRKGVIKATPTTCDPQLVDHSVLLVGFSGVKSE EGIWAETVSSSQSQPPHPTPYWILKNSWGAQWGEKGYFRLHRGSNTCGITKFPL TARVQKPDMPRVSCPP
Applications	Enzyme-linked Immunoabsorbent Assay Western Blot (Recombinant protein)

 Tel: 1-631-559-9269 1-516-512-3133

 Email: info@creative-biomart.com  Fax: 1-631-938-8127

 45-1 Ramsey Road, Shirley, NY 11967, USA



	Antibody Production Protein Array
Notes	Best use within three months from the date of receipt of this protein.
Storage	Store at -80 centigrade. Aliquot to avoid repeated freezing and thawing.
Storage Buffer	50 mM Tris-HCl, 10 mM reduced Glutathione, pH=8.0 in the elution buffer.

GENE INFORMATION

Gene Name	CTSW cathepsin W [Homo sapiens]
Official Symbol	CTSW
Synonyms	CTSW; cathepsin W; cathepsin W (lymphopain); lymphopain; LYPN;
Gene ID	1521
mRNA Refseq	NM_001335
Protein Refseq	NP_001326
MIM	602364
UniProt ID	P56202

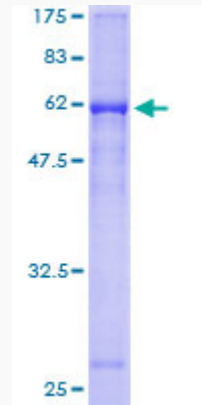
Tel: 1-631-559-9269 1-516-512-3133

Email: info@creative-biomart.com Fax: 1-631-938-8127

45-1 Ramsey Road, Shirley, NY 11967, USA

Quality Control

Testing:



12.5% SDS-PAGE Stained with Coomassie Blue.

 Tel: 1-631-559-9269 1-516-512-3133

 Email: info@creative-biomart.com  Fax: 1-631-938-8127

 45-1 Ramsey Road, Shirley, NY 11967, USA